

## Product datasheet for **AP01339PU-N**

### **TAS2R49 (TAS2R20) Rabbit Polyclonal Antibody**

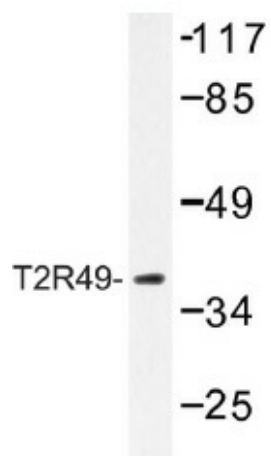
#### **Product data:**

Product Type:	Primary Antibodies
Applications:	WB
Recommended Dilution:	<b>Western Blot:</b> 1/500-1/1000.
Reactivity:	Human
Host:	Rabbit
Clonality:	Polyclonal
Specificity:	T2R49 antibody detects endogenous levels of T2R49 protein. (region surrounding Val129)
Formulation:	Phosphate buffered saline (PBS) with 0.05% sodium azide, approx. pH 7.2. State: Aff - Purified State: Liquid purified Ig fraction
Concentration:	1.0 mg/ml
Purification:	Affinity chromatography
Conjugation:	Unconjugated
Storage:	Store the antibody undiluted at 2-8°C for one month or (in aliquots) at -20°C for longer. Avoid repeated freezing and thawing.
Stability:	Shelf life: one year from despatch.
Predicted Protein Size:	~ 38 kDa
Gene Name:	taste 2 receptor member 20
Database Link:	<a href="#">Entrez Gene 259295 Human P59543</a>
Background:	The sense of taste provides animals with valuable information about the quality and nutritional value of food. A family of G protein-coupled receptors are involved in taste perception and include T1R, which is involved in sweet and umami taste perception and T2R, which is involved in bitter taste perception. Both types of taste receptors couple to various G proteins to initiate signal transduction cascades. T2R49 plays a role in sensing the chemical composition of the gastrointestinal content. T2R49 is expressed in subsets of taste receptor cells of the tongue and exclusively in gustducin-positive cells.
Synonyms:	Taste receptor T2R49, T2R56



[View online »](#)

## Product images:



Western blot (WB) analysis of T2R49 antibody (Cat.-No.: AP01339PU-N) in extracts from COLO/HepG2 cells.