

Product datasheet for **AP01336PU-M**

GPR10 (PRLHR) Rabbit Polyclonal Antibody

Product data:

Product Type:	Primary Antibodies
Applications:	IF, WB
Recommended Dilution:	Western Blot: 1/500-1/1000. Immunofluorescence: 1/50-1/200.
Reactivity:	Human, Mouse, Rat
Host:	Rabbit
Clonality:	Polyclonal
Specificity:	GPR10 antibody detects endogenous levels of GPR10 protein. (region surrounding Gln223)
Formulation:	Phosphate buffered saline (PBS) with 0.05% sodium azide, approx. pH 7.2. State: Aff - Purified State: Liquid purified Ig fraction
Concentration:	1.0 mg/ml
Purification:	Affinity chromatography
Conjugation:	Unconjugated
Storage:	Store the antibody undiluted at 2-8°C for one month or (in aliquots) at -20°C for longer. Avoid repeated freezing and thawing.
Stability:	Shelf life: one year from despatch.
Predicted Protein Size:	~ 41 kDa
Gene Name:	prolactin releasing hormone receptor
Database Link:	Entrez Gene 226278 Mouse Entrez Gene 246075 Rat Entrez Gene 2834 Human P49683

[View online »](#)

Background:

G protein-coupled receptors (GPRs or GPCRs), also known as seven transmembrane receptors, heptahelical receptors or 7TM receptors, are members of the largest protein family and play a role in many different stimulus-response pathways. G protein-coupled receptors mediate extracellular signals into intracellular signals (G protein activation). They respond to a great variety of signaling molecules, including hormones, neurotransmitters and other proteins and peptides. GPR proteins are integral seven-pass membrane proteins with some conserved amino acid regions. G protein coupled receptor 10 (GPR10) acts as a receptor for prolactin-releasing peptide (PrRP). GPR10 plays a role in the regulation of food intake, pain-signal processing and in lactation. Primarily expressed in pituitary gland, it is repressed by bromocriptine. GPR10 interacts with various other proteins, including GRIP1, GRIP2 and PICK1.

Synonyms:

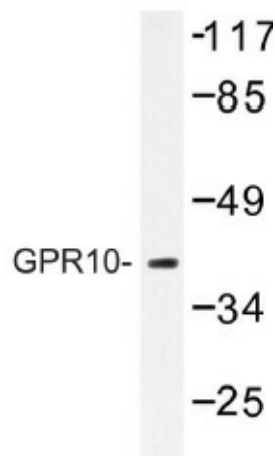
PrRP receptor, PrRPR, GR3, G-protein coupled receptor 10

Protein Families:

Druggable Genome, GPCR, Transmembrane

Protein Pathways:

Neuroactive ligand-receptor interaction

Product images:


Western blot (WB) analysis of GPR10 antibody (Cat.-No.: [AP01336PU-N]) in extracts from Jurkat cells.