

## Product datasheet for **AP01333PU-M**

### **P2Y4 (P2RY4) Rabbit Polyclonal Antibody**

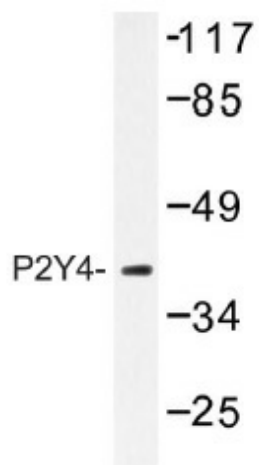
#### **Product data:**

Product Type:	Primary Antibodies
Applications:	WB
Recommended Dilution:	<b>Western Blot:</b> 1/500-1/1000. <b>Immunofluorescence:</b> 1/50-1/200.
Reactivity:	Human, Mouse, Rat
Host:	Rabbit
Clonality:	Polyclonal
Specificity:	P2Y4 antibody detects endogenous levels of P2Y4 protein. (region surrounding Val198)
Formulation:	Phosphate buffered saline (PBS) with 0.05% sodium azide, approx. pH 7.2. State: Aff - Purified State: Liquid purified Ig fraction
Concentration:	1.0 mg/ml
Purification:	Affinity chromatography
Conjugation:	Unconjugated
Storage:	Store the antibody undiluted at 2-8°C for one month or (in aliquots) at -20°C for longer. Avoid repeated freezing and thawing.
Stability:	Shelf life: one year from despatch.
Predicted Protein Size:	~ 41 kDa
Gene Name:	pyrimidinergic receptor P2Y4
Database Link:	<a href="#">Entrez Gene 5030 Human P51582</a>
Background:	The product of this gene belongs to the family of G-protein coupled receptors. This family has several receptor subtypes with different pharmacological selectivity, which overlaps in some cases, for various adenosine and uridine nucleotides. This receptor is responsive to uridine nucleotides, partially responsive to ATP, and not responsive to ADP. P2Y4 expression has been documented in blood, bone, heart, lung, pancreas, placenta, and umbilical cord.
Synonyms:	P2Y purinoceptor 4, P2P, Purinergic receptor, Uridine nucleotide receptor, UNR, NRU



[View online »](#)

## Product images:



Western blot (WB) analysis of P2Y4 antibody (Cat.-No.: [AP01333PU-N]) in extracts from HeLa cells.