

## Product datasheet for **AP01329PU-N**

### Neuroserpin (SERPINI1) Rabbit Polyclonal Antibody

#### Product data:

Product Type:	Primary Antibodies
Applications:	IF, WB
Recommended Dilution:	<b>Western Blot:</b> 1/500-1/1000. <b>Immunofluorescence:</b> 1/50-1/200.
Reactivity:	Human, Mouse
Host:	Rabbit
Clonality:	Polyclonal
Specificity:	Neuroserpin antibody detects endogenous levels of Neuroserpin protein. (region surrounding Gln286)
Formulation:	Phosphate buffered saline (PBS) with 0.05% sodium azide, approx. pH 7.2. State: Aff - Purified State: Liquid purified Ig fraction
Concentration:	1.0 mg/ml
Purification:	Affinity chromatography
Conjugation:	Unconjugated
Storage:	Store the antibody undiluted at 2-8°C for one month or (in aliquots) at -20°C for longer. Avoid repeated freezing and thawing.
Stability:	Shelf life: one year from despatch.
Predicted Protein Size:	~ 43 kDa
Gene Name:	serpin family I member 1
Database Link:	<a href="#">Entrez Gene 5274 Human Q99574</a>



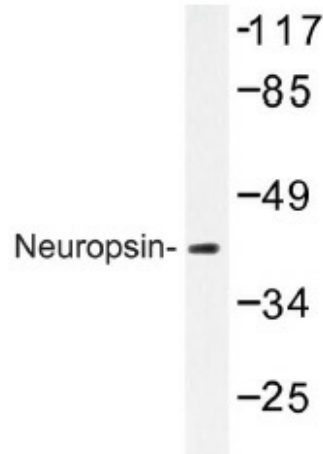
[View online »](#)

**Background:**

GPCR GPR136, also known as Opsin 5, is a member of the guanine nucleotide-binding protein (G protein)-coupled receptor superfamily. This gene belongs to the seven-exon subfamily of mammalian opsin genes that includes peropsin (RRH) and retinal G protein coupled receptor (RGR). Like these other seven-exon opsin genes, this gene may encode a protein with photoisomerase activity. Alternative splicing results in multiple transcript variants encoding different isoforms. ESTs for the GPR136 gene have been identified from human normal testis and B-cell/lung/testis libraries.

**Synonyms:**

Serpin I1, PI12, PI-12

**Product images:**

Western blot (WB) analysis of Neuroserpin antibody (Cat.-No.: AP01329PU-N) in extracts from Jurkat cells.