

## Product datasheet for **AP01328PU-N**

### Melanopsin (OPN4) Rabbit Polyclonal Antibody

#### Product data:

Product Type:	Primary Antibodies
Applications:	IF, WB
Recommended Dilution:	<b>Western Blot:</b> 1/500-1/1000. <b>Immunofluorescence:</b> 1/50-1/200.
Reactivity:	Human, Mouse, Rat
Host:	Rabbit
Clonality:	Polyclonal
Immunogen:	Synthetic peptide, corresponding to amino acids 440-486 of Human Melanopsin.
Specificity:	This antibody detects endogenous levels of Melanopsin protein. (region surrounding Leu470)
Formulation:	Phosphate Buffered Saline (PBS), pH~7.2 State: Aff - Purified State: Liquid purified Ig fraction (> 95% by SDS-PAGE) Preservative: 0.05% Sodium Azide
Concentration:	1.0 mg/ml
Purification:	Affinity Chromatography using epitope-specific immunogen
Conjugation:	Unconjugated
Storage:	Store the antibody undiluted at 2-8°C for one month or (in aliquots) at -20°C for longer. Avoid repeated freezing and thawing.
Stability:	Shelf life: one year from despatch.
Predicted Protein Size:	~55 kDa
Gene Name:	opsin 4
Database Link:	<a href="#">Entrez Gene 94233 Human</a> <a href="#">Q9UHM6</a>



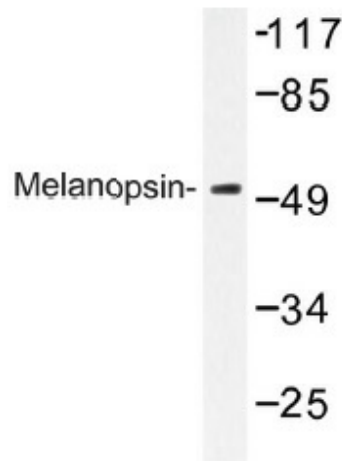
[View online »](#)

**Background:**

Melanopsin is an opsin-like protein found in the retinal ganglion cells of mammals. Melanopsin is believed to be part of a secondary optical system that parallels that of the classic rod and cone system. This second system reports directly to the suprachiasmatic nucleus and is responsible for regulation of circadian rhythms. Melanopsin is believed to be the primary photopigment responsible for the regulation of these circadian rhythms, and Melanopsin knockout mice have been generated which demonstrate decreased capacity to entrain to light and dark cycles.

**Synonyms:**

OPN4, MOP, Opsin-4

**Product images:**

Western blot (WB) analysis of Melanopsin antibody in extracts from COLO cells.