

## Product datasheet for **AP01327PU-M**

### Encephalopsin (OPN3) Rabbit Polyclonal Antibody

#### Product data:

Product Type:	Primary Antibodies
Applications:	IF, IHC, WB
Recommended Dilution:	<b>Western Blot:</b> 1/500-1/1000. <b>Immunofluorescence:</b> 1/50-1/200. <b>Immunohistochemistry on Paraffin Sections:</b> 1/50-1/200.
Reactivity:	Human, Mouse
Host:	Rabbit
Clonality:	Polyclonal
Immunogen:	Synthetic peptide corresponding to amino acids 176-220 of Human Encephalopsin.
Specificity:	This antibody detects endogenous levels of Encephalopsin protein. (region surrounding Phe202)
Formulation:	Phosphate Buffered Saline (PBS), pH~ 7.2 State: Aff - Purified State: Liquid purified Ig fraction (> 95% by SDS-PAGE) Preservative: 15 mM Sodium Azide
Concentration:	1.0 mg/ml
Purification:	Affinity Chromatography using epitope-specific immunogen
Conjugation:	Unconjugated
Storage:	Store undiluted at 2-8°C for one month or (in aliquots) at -20°C for longer. Avoid repeated freezing and thawing.
Stability:	Shelf life: one year from despatch.
Predicted Protein Size:	~ 47.0 kDa
Gene Name:	opsin 3
Database Link:	<a href="#">Entrez Gene 13603 Mouse</a> <a href="#">Entrez Gene 23596 Human</a> <a href="#">Q9H1Y3</a>



[View online »](#)

## Background:

Opsins, including Encephalopsin, are members of the superfamily of guanine nucleotide-binding protein (G protein)-coupled receptors, which function through the activation of a G protein and an effector enzyme. Opsin proteins consist of a single polypeptide chain of 340 to 500 amino acids that form 7 alpha-helical transmembrane regions connected by cytoplasmic and extracellular loops.

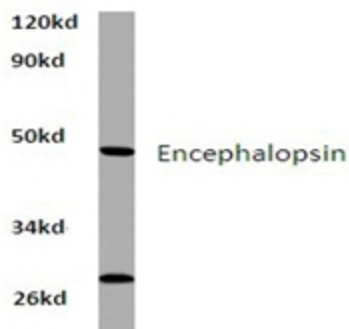
## Synonyms:

Encephalopsin, Panopsin, OPN3, ECPN

## Protein Families:

Druggable Genome, GPCR, Transmembrane

## Product images:



Western blot analysis of Encephalopsin antibody in extracts from Hela cells at 1/500 dilution.