

## Product datasheet for **AP01324PU-M**

### **NPY5R Rabbit Polyclonal Antibody**

#### **Product data:**

Product Type:	Primary Antibodies
Applications:	IF, IHC, WB
Recommended Dilution:	<b>Western Blot:</b> 1/500-1/1000. <b>Immunofluorescence:</b> 1/50-1/200. <b>Immunohistochemistry on paraffin sections:</b> 1/50-1/200.
Reactivity:	Human, Mouse, Rat
Host:	Rabbit
Clonality:	Polyclonal
Immunogen:	Synthetic peptide, corresponding to amino acids 230-286 of Human NPY5-R.
Specificity:	NPY5-R antibody detects endogenous levels of NPY5-R protein. (region surrounding Met264)
Formulation:	PBS with 0.02% Sodium Azide, 50% glycerol, pH7.2 State: Liquid purified Ig fraction (> 95% pure by SDS-PAGE).
Concentration:	1.0 mg/ml
Purification:	Affinity Chromatography using epitope-specific immunogen.
Conjugation:	Unconjugated
Storage:	Store the antibody undiluted at 2-8°C for one month or (in aliquots) at -20°C for longer. Avoid repeated freezing and thawing.
Stability:	Shelf life: one year from despatch.
Predicted Protein Size:	~ 48 kDa
Gene Name:	neuropeptide Y receptor Y5
Database Link:	<a href="#">Entrez Gene 4889 Human Q15761</a>



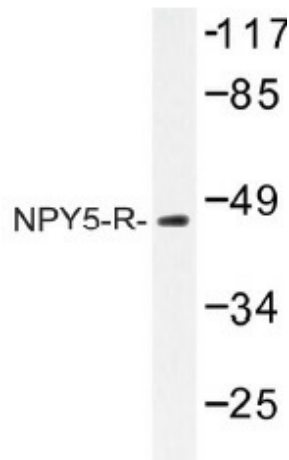
[View online »](#)

**Background:**

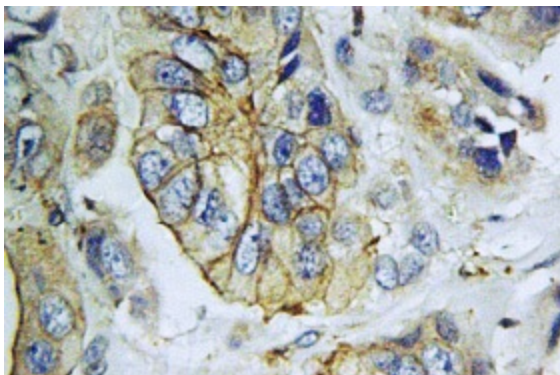
Pancreatic polypeptide (PP), neuropeptide Y (NPY), and peptide YY (PYY) are related 36-amino acid hormones. A number of structurally related receptors for these peptides have been isolated, NPY1-R, NPY2-R, NPY3-R, NPY4-R, NPY5-R, and NPY6-R. NPY4-R is expressed in several human tissues, including brain, coronary artery, and ileum. NPY4-R maps to human chromosome 10q11.2-q21.2. NPY-5R, isolated from rat hypothalamus, encodes a 456-amino acid protein with less than 35% overall identity to known Y-type receptors. The human NPY-5R sequence is nearly identical to, but in the opposite orientation from, that of the human NPY-1R sequence. NPY5-R localizes to the paraventricular hypothalamic nucleus, the lateral hypothalamus, and other locations consistent with a role in the control of feeding behavior. The gene which encodes NPY-5R maps to human chromosome 4q31-32. NPY-6R is abundantly expressed in human heart and skeletal muscle and the gene which encodes NPY-6R maps to human chromosome 5q31.

**Synonyms:**

NPY5-R, NPY-Y5 receptor, NPY5, NPYR5, Neuropeptide Y receptor 5

**Product images:**


Western blot (WB) analysis of NPY5-R antibody (Cat.-No.: [AP01324PU-N]) in extracts from COLO/Jurkat/HepG2 cells.



Immunohistochemistry (IHC) analysis of NPY5-R antibody (Cat.-No.: [AP01324PU-N]) in paraffin-embedded human breast carcinoma tissue.