

## Product datasheet for **AP01323PU-M**

### NPY receptor 2 / NPY2R Rabbit Polyclonal Antibody

#### Product data:

Product Type:	Primary Antibodies
Applications:	IF, WB
Recommended Dilution:	<b>Western Blot:</b> 1/500-1/1000. <b>Immunofluorescence:</b> 1/50-1/200. <b>Immunohistochemistry:</b> 1/50-1/200.
Reactivity:	Human, Mouse, Rat
Host:	Rabbit
Clonality:	Polyclonal
Immunogen:	Synthetic peptide, corresponding to amino acids 30-80 of Human NPY2-R.
Specificity:	This antibody detects endogenous levels of NPY2-R protein. (region surrounding Asp42)
Formulation:	Phosphate buffered saline (PBS) with 0.09% sodium azide, approx. pH 7.2. State: Aff - Purified State: Liquid purified Ig fraction
Concentration:	1.0 mg/ml
Purification:	Affinity chromatography
Conjugation:	Unconjugated
Storage:	Store the antibody undiluted at 2-8°C for one month or (in aliquots) at -20°C for longer. Avoid repeated freezing and thawing.
Stability:	Shelf life: one year from despatch.
Predicted Protein Size:	~ 43 kDa
Gene Name:	neuropeptide Y receptor Y2
Database Link:	<a href="#">Entrez Gene 18167 Mouse P97295</a>



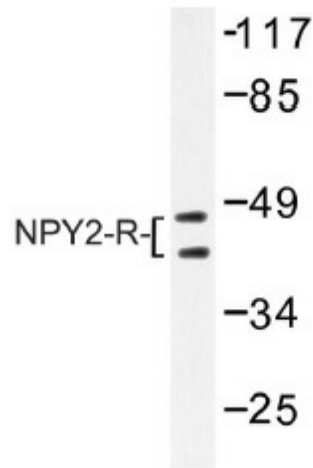
[View online »](#)

**Background:**

A gene on chromosome 4q31 encodes a 381 amino acid protein, NPY2-R(also designated Neuropeptide Y receptor Y2). NPY2-R is a member of the Gprotein-coupled receptor super-family, and like other members has seven putative transmembrane domains. However, NPY2-R gene consists of two exons, unlike the contiguous structure of other G-protein-coupled receptor genes. NPY2-R shares a 31% sequence identity with NPY1-R. NPY2-R is expressed in the presynaptic membranes of the central nervous system, and to a lesser extent the peripheral nervous system. NPY2-R associates (from highest to lowest affinity) with carboxyl terminals of unphosphorylate Peptide YY (PYY) (phosphorylation of PYY greatly reduces its binding affinity), NPY, and Pancreatic Peptide. Depending on the cell type, NPY2-R couples with different G proteins, which act as different second messengers. NPY2-R reduces the effects of depolarization, calcium ion currents in arterial smooth muscle by through association with NPY. NPY2-R inhibits cholecystokinin octapeptide-induced, esophageal muscle contraction, through interactions with PYY and NPY.

**Synonyms:**

NPY2-R, NPY-Y2 receptor, Y2 receptor, Neuropeptide Y receptor 2

**Product images:**


Western blot (WB) analysis of NPY2-R antibody (Cat.-No.: [AP01323PU-N]) in extracts from HepG2 cells.