

Product datasheet for **AP01322PU-N**

Melatonin Receptor 1B (MTNR1B) Rabbit Polyclonal Antibody

Product data:

Product Type:	Primary Antibodies
Applications:	WB
Recommended Dilution:	Western blot: 1/500-1/1000. Immunohistochemistry: 1/50-1/200.
Reactivity:	Human
Host:	Rabbit
Clonality:	Polyclonal
Immunogen:	Synthetic peptide, corresponding to amino acids N-terminus of Human MEL-1B-R.
Specificity:	This antibody detects endogenous levels of MEL-1B-R protein around Val39.
Formulation:	Phosphate buffered saline (PBS), pH~7.2, 50% Glycerol State: Aff - Purified State: Liquid purified Ig fraction (> 95% pure by SDS-PAGE) Preservative: 0.05% Sodium Azide
Concentration:	1.0 mg/ml
Purification:	Affinity Chromatography using epitope-specific immunogen
Conjugation:	Unconjugated
Storage:	Store undiluted at 2-8°C for one month or (in aliquots) at -20°C for longer. Avoid repeated freezing and thawing.
Stability:	Shelf life: one year from despatch.
Predicted Protein Size:	~40 kDa
Gene Name:	melatonin receptor 1B
Database Link:	Entrez Gene 4544 Human P49286



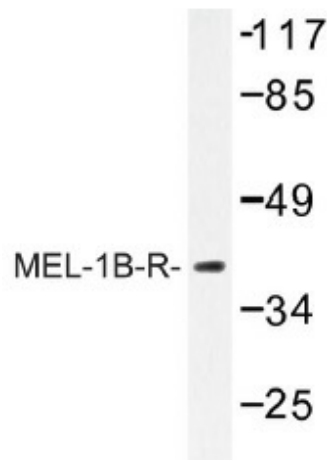
[View online »](#)

Background:

The melatonin receptors, MEL-1A-R and MEL-1B-R, are members of the superfamily of guanine nucleotide-binding regulatory protein (G protein)-coupled receptors. The melatonin receptors are activated by the hormone melatonin (Mel), which is secreted by the pineal gland at night as part of the circadian clock. MEL-1A-R, a 37 kD protein, is thought to be involved in pacing the biological clock. However, both MEL-1A-R and MEL-1B-R are implicated in controlling cellular growth in response to melatonin. MEL-1B-R is an integral membrane protein expressed in retina and less in brain and hippocampus. Functional studies of NIH/3T3 cells stably expressing the MEL-1B-R melatonin receptor indicate that it is coupled to inhibition of adenylyl cyclase.

Synonyms:

MTNR1B

Product images:

Western blot (WB) analysis of MEL-1B-R antibody in extracts from 293/Jurkat/HepG2 cells.