

## Product datasheet for **AP01321PU-N**

### MPRA (PAQR7) Rabbit Polyclonal Antibody

#### Product data:

Product Type:	Primary Antibodies
Applications:	IF, WB
Recommended Dilution:	<b>Western Blot:</b> 1/500-1/1000. <b>Immunofluorescence:</b> 1/50-1/200.
Reactivity:	Human
Host:	Rabbit
Clonality:	Polyclonal
Specificity:	mPR $\alpha$ antibody detects endogenous levels of mPR $\alpha$ protein.
Formulation:	Phosphate buffered saline (PBS) with 0.05% sodium azide, approx. pH 7.2. State: Aff - Purified State: Liquid purified Ig fraction
Concentration:	1.0 mg/ml
Purification:	Affinity chromatography
Conjugation:	Unconjugated
Storage:	Store the antibody undiluted at 2-8°C for one month or (in aliquots) at -20°C for longer. Avoid repeated freezing and thawing.
Stability:	Shelf life: one year from despatch.
Predicted Protein Size:	~ 40 kDa
Gene Name:	progesterone and adiponectin receptor family member 7
Database Link:	<a href="#">Entrez Gene 164091 Human</a> <a href="#">Q86WK9</a>



[View online »](#)

**Background:**

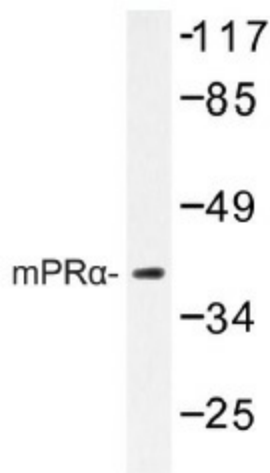
The steroid progesterone induces the resumption of maturation in oocytes via a nongenomic pathway through binding to a novel, membrane progesterin receptor (mPR). This pathway inhibits adenylyl cyclase and reduces intracellular cAMP, and also activates mitogen-activated protein kinase to effect signal transduction pathways. Three distinct groups, designated  $\alpha$ ,  $\beta$  and  $\gamma$ , comprise this gene family. mPR $\alpha$ , also designated progesterin and adipoQ receptor family member VII (PAQR7), consists of an extracellular N-terminus, an intracellular C-terminus, and seven transmembrane domains. It is expressed in ovary, testis, placenta, uterus and bladder. mPR $\beta$ , also designated progesterin and adipoQ receptor family member VIII (PAQR8), consists of eight putative transmembrane regions and an intracellular N-terminus that contains a leucine-rich motif. It is a 354 amino acid protein with a molecular mass of about 40 kDa and is expressed in brain and spinal cord. Both mPR $\alpha$  and mPR $\beta$  may be G protein-coupled receptors and may be involved in oocyte maturation.

**Synonyms:**

Membrane progesterin receptor alpha, mPR alpha

**Protein Families:**

Druggable Genome, Transmembrane

**Product images:**


Western blot (WB) analysis of mPR $\alpha$  antibody (Cat.-No.: AP01321PU-N) in extracts from 293/COLO cells.