

Product datasheet for **AP01317PU-N**

GALR2 Rabbit Polyclonal Antibody

Product data:

Product Type:	Primary Antibodies
Applications:	WB
Recommended Dilution:	Western Blot: 1/500-1/1000.
Reactivity:	Human, Mouse, Rat
Host:	Rabbit
Clonality:	Polyclonal
Immunogen:	Synthetic peptide, corresponding to amino acids 211-260 of Human GALR2.
Specificity:	This antibody detects endogenous levels of GALR2 protein. (region surrounding Ile238)
Formulation:	PBS, pH~7.2 State: Aff - Purified State: Liquid purified Ig fraction (> 95% pure by SDS-PAGE) Preservative: 15 mM Sodium Azide
Concentration:	1.0 mg/ml
Purification:	Affinity Chromatography using epitope-specific immunogen
Conjugation:	Unconjugated
Storage:	Store undiluted at 2-8°C for one month or (in aliquots) at -20°C for longer. Avoid repeated freezing and thawing.
Stability:	Shelf life: one year from despatch.
Predicted Protein Size:	~40.0 kDa
Gene Name:	galanin receptor 2
Database Link:	Entrez Gene 8811 Human O43603



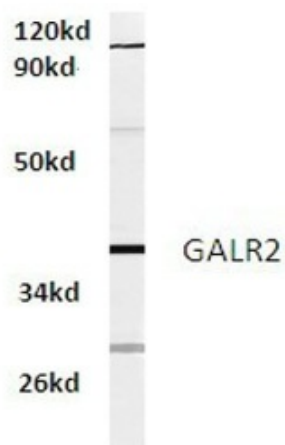
[View online »](#)

Background:

Galanin is an important neuromodulator present in the brain, gastrointestinal system, and hypothalamopituitary axis. It is a 30 amino acid non-C-terminally amidated peptide that potently stimulates growth hormone secretion, inhibits cardiac vagal slowing of heart rate, abolishes sinus arrhythmia, and inhibits postprandial gastrointestinal motility. The actions of galanin are mediated through interaction with specific membrane receptors that are members of the 7 transmembrane family of G protein coupled receptors. GALR2 interacts with the N terminal residues of the galanin peptide. The primary signaling mechanism for GALR2 is through the phospholipase C/protein kinase C pathway (via Gq), in contrast to GALR1, which communicates its intracellular signal by inhibition of adenylyl cyclase through Gi.

Synonyms:

GALR-2, GALNR2, GAL2-R, Galanin receptor type 2

Product images:


Western blot analysis of GALR2 antibody in RAW264.7 whole cell lysate at 1/500 dilution.