

## Product datasheet for **AP01311PU-M**

### S1PR2 Rabbit Polyclonal Antibody

#### Product data:

Product Type:	Primary Antibodies
Applications:	IF, WB
Recommended Dilution:	<b>Western blot:</b> 1/500-1/1000. <b>Immunofluorescence:</b> 1/50-1/200.
Reactivity:	Human, Mouse, Rat
Host:	Rabbit
Clonality:	Polyclonal
Immunogen:	Synthetic peptide corresponding to amino acids 271-320 of Human EDG-5.
Specificity:	This antibody detects endogenous levels of EDG-5 protein (region surrounding Leu300).
Formulation:	Phosphate buffered saline (PBS), pH~7.2, 50% Glycerol State: Aff - Purified State: Liquid purified Ig fraction (> 95% pure by SDS-PAGE) Preservative: 0.02% Sodium Azide
Concentration:	1.0 mg/ml
Purification:	Affinity Chromatography using epitope-specific immunogen
Conjugation:	Unconjugated
Storage:	Store undiluted at 2-8°C for one month or (in aliquots) at -20°C for longer. Avoid repeated freezing and thawing.
Stability:	Shelf life: one year from despatch.
Predicted Protein Size:	~39 kDa
Gene Name:	sphingosine-1-phosphate receptor 2
Database Link:	<a href="#">Entrez Gene 9294 Human</a> <a href="#">O95136</a>



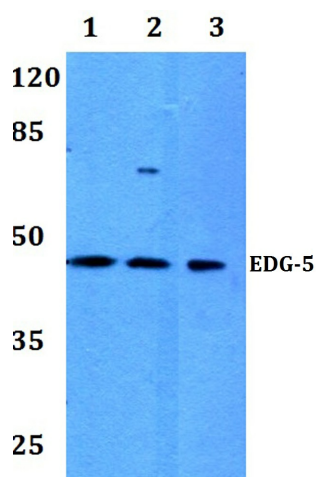
[View online »](#)

**Background:**

The EDG (endothelial differentiation gene) family of G protein coupled receptors consists of eight family members that bind lysophospholipid (LPL) mediators, including sphingosine-1-phosphate (SPP) and lysophosphatidic acid (LPA). EDG-1, EDG-3, EDG-5 (also designated H218 and AGR16) and EDG-8 bind SPP with high-affinity. EDG-6 is a low-affinity receptor for SPP. LPA preferentially binds to EDG-2, EDG-4 and EDG-7. The EDG receptors couple to multiple G proteins to signal through Ras, MAP kinase, Rho, Phospholipase C or other tyrosine kinases, which lead to cell survival, growth, migration and differentiation. EDG-1 signals through Gi proteins to activate Akt and is expressed in glioma cells. EDG-2 is expressed in brain, especially in white matter tract regions, while EDG-3 is expressed in cardiovascular tissue and in cerebellum. EDG-4 is highly expressed on leukocytes and brain, and EDG-5 has wide tissue distribution, including cardiovascular tissue and brain. Expressed in lymphoid and hematopoietic tissues and in lung, EDG-6 signals through Gi/o proteins, which activate growth related pathways.

**Synonyms:**

S1P receptor 2, S1PR2, EDG5, H218, LPB2, AGR16, Gpcr13

**Product images:**


Western blot (WB) analysis of EDG-5 antibody at 1/500 dilution: Lane 1: HEK293T whole cell lysate  
Lane 2: Raw264.7 whole cell lysate Lane 3: H9C2 whole cell lysate