

Product datasheet for **AP01302PU-N**

GPR120 (FFAR4) Rabbit Polyclonal Antibody

Product data:

Product Type:	Primary Antibodies
Applications:	ELISA, IF, WB
Recommended Dilution:	Western blot: 1/500-1/1000. Immunofluorescence: 1/50-1/200.
Reactivity:	Human, Mouse, Rat
Host:	Rabbit
Clonality:	Polyclonal
Immunogen:	Synthetic peptide, corresponding to amino acids 226-284 of Human GPR120.
Specificity:	This antibody detects endogenous levels of GPR120 protein. (region surrounding Val259)
Formulation:	Phosphate buffered saline (PBS), pH~7.2 State: Aff - Purified State: Liquid purified Ig fraction (>95% pure by SDS-PAGE). Preservative: 0.05% Sodium Azide
Concentration:	1.0 mg/ml
Purification:	Affinity Chromatography using epitope-specific immunogen.
Conjugation:	Unconjugated
Storage:	Store undiluted at 2-8°C for one month or (in aliquots) at -20°C for longer. Avoid repeated freezing and thawing.
Stability:	Shelf life: one year from despatch.
Predicted Protein Size:	~ 42 kDa
Gene Name:	free fatty acid receptor 4
Database Link:	Entrez Gene 338557 Human Q5NUL3



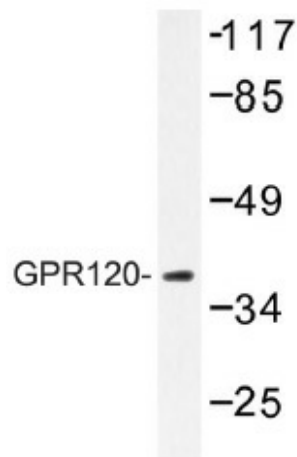
[View online »](#)

Background:

GPR120, a member of the rhodopsin family of G protein-coupled receptors (GPCRs), is a 377 amino acid protein which is expressed in the intestine. GPR120 is a receptor for unsaturated long-chain FFAs (free fatty acids). FFAs act as signaling molecules and are an important energy source. They also employ various physiological responses through their GPCRs. One such response occurs when dietary FFAs stimulate GPR120. This stimulation promotes the secretion of Glucagon-like peptide-1 (GLP-1) in vivo and in vitro. GLP-1 belongs to the class of molecules known as the incretins, which are associated with insulin secreted from the pancreas as a result of food intake. GLP-1 also inhibits Glucagon and gastric acid secretion and gastric emptying. Consequently, the role of GPR120 in the secretion of GLP-1 is critical in the treatment of diabetes.

Synonyms:

G-protein coupled receptor 120, PGR4, GPR129, GT01

Note:**Product images:**

Western blot (WB) analysis of GPR120 antibody in extracts from LOVO cells.