

## Product datasheet for **AP01299PU-N**

### Frizzled 7 (FZD7) Rabbit Polyclonal Antibody

#### Product data:

Product Type:	Primary Antibodies
Applications:	ELISA, IF, WB
Recommended Dilution:	<b>Western Blot:</b> 1/500-1/1000. <b>Immunofluorescence:</b> 1/50-1/200.
Reactivity:	Human, Mouse
Host:	Rabbit
Clonality:	Polyclonal
Immunogen:	Synthetic peptide, corresponding to amino acids 61-110 of Human Frizzled-7.
Specificity:	This antibody detects endogenous levels of Frizzled-7 protein. (region surrounding Tyr87)
Formulation:	Phosphate buffered saline (PBS), pH 7.2. State: Aff - Purified State: Liquid purified Ig fraction. Preservative: 0.05% Sodium Azide
Concentration:	1.0 mg/ml
Purification:	Affinity Chromatography.
Conjugation:	Unconjugated
Storage:	Store undiluted at 2-8°C for one month or (in aliquots) at -20°C for longer. Avoid repeated freezing and thawing.
Stability:	Shelf life: one year from despatch.
Predicted Protein Size:	~ 64, 85 kDa
Gene Name:	frizzled class receptor 7
Database Link:	<a href="#">Entrez Gene 8324 Human O75084</a>



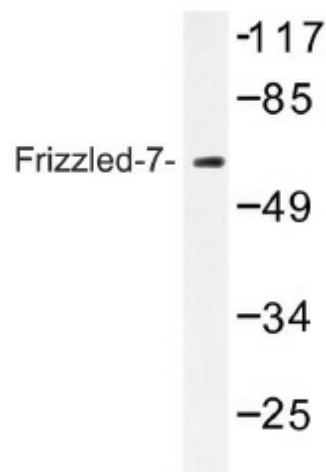
[View online »](#)

**Background:**

The frizzled gene, originally identified in *Drosophila melanogaster*, is involved in the development of tissue polarity. The mammalian homolog of frizzled, as well as several secreted mammalian frizzled-related proteins: FRP-1 (also designated SARP2), FRP-2 (also designated SARP1), FRP-3, FRP-4 and SARP3 (also designated FRP-5), have been identified. The frizzled proteins contain seven transmembrane domains, a cysteine-rich domain in the extracellular region and a carboxy terminal Ser/Thr-xxx-Val motif. They function as receptors for Wnt. frizzled-7 has a Lys-Thr-X-X-X-Trp motif which is involved in the activation of the Wnt/beta-catenin signaling pathway. frizzled-7 is an integral membrane protein showing a high expression in adult skeletal muscle, fetal kidney, fetal lung, adult heart, brain and placenta. It is specifically expressed in squamous cell esophageal carcinomas.

**Synonyms:**

Fz-7, mFz7

**Product images:**

Western blot (WB) analysis of Frizzled-7 antibody in extracts from HT-29 cells.