

## Product datasheet for **AP01297PU-N**

### CysLT2 (CYSLTR2) Rabbit Polyclonal Antibody

#### Product data:

Product Type:	Primary Antibodies
Applications:	ELISA, IF, WB
Recommended Dilution:	<b>Western blot:</b> 1/500-1/1000. <b>Immunofluorescence:</b> 1/50-1/200.
Reactivity:	Human
Host:	Rabbit
Clonality:	Polyclonal
Immunogen:	Synthetic peptide, corresponding to amino acids 292-343 of Human CysLTR2.
Specificity:	This antibody detects endogenous levels of CYSLTR2 protein (region surrounding His324).
Formulation:	Phosphate buffered saline (PBS), pH 7.2 State: Aff - Purified State: Liquid purified Ig fraction Preservative: 0.05% Sodium azide
Concentration:	1.0 mg/ml
Purification:	Affinity-chromatography using epitope-specific immunogen and the purity is > 95% (by SDS-PAGE).
Conjugation:	Unconjugated
Storage:	Store undiluted at 2-8°C for one month or (in aliquots) at -20°C for longer. Avoid repeated freezing and thawing.
Stability:	Shelf life: one year from despatch.
Predicted Protein Size:	~ 40 kDa
Gene Name:	cysteinyl leukotriene receptor 2
Database Link:	<a href="#">Entrez Gene 57105 Human Q9NS75</a>



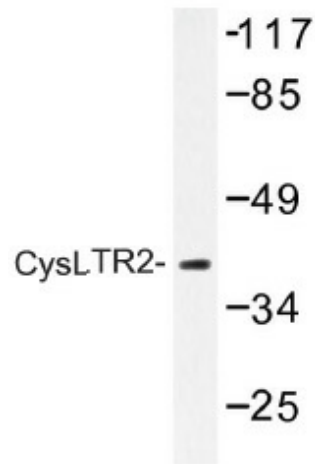
[View online »](#)

**Background:**

Cysteinyl leukotriene (CysLTs) induce intracellular calcium mobilization through the binding of two distinct seven-transmembrane, G protein-coupled receptors, designated CysLT1 Receptor and CysLT2 Receptor, to induce potent bronchoconstriction. Airway smooth muscle and macrophages express both receptor types, and additionally monocytes and eosinophils express CysLT1 Receptor, while cardiac Purkinje cells, adrenal medulla, peripheral blood leukocytes and brain also utilize CysLT2 Receptor. The effects of the CysLT Receptors can be blocked by antagonists, indicating a therapeutic mechanism for the treatment of asthma and allergies.

**Synonyms:**

Cysteinyl leukotriene receptor 2, CysLTR2, CYSLT2, HG57, HPN321, hGPCR21

**Product images:**

Western blot analysis with extracts from COLO cells using CYSLTR2 antibody.