

Product datasheet for **AP01296PU-N**

CXCR4 Rabbit Polyclonal Antibody

Product data:

Product Type:	Primary Antibodies
Applications:	IF, WB
Recommended Dilution:	Western blot: 1/500-1/1000. Immunofluorescence: 1/50-1/200.
Reactivity:	Human, Mouse, Rat
Host:	Rabbit
Clonality:	Polyclonal
Immunogen:	Synthetic peptide, corresponding to amino acids 310-360 of Human CXCR-4.
Specificity:	CXCR-4 (V340) pAb detects endogenous levels of CXCR-4 protein.
Formulation:	Phosphate buffered saline (PBS), pH~7.2 State: Aff - Purified State: Liquid purified Ig fraction (> 95% pure by SDS-PAGE) Preservative: 0.05% Sodium Azide
Concentration:	1.0 mg/ml
Purification:	Affinity Chromatography using epitope-specific immunogen
Conjugation:	Unconjugated
Storage:	Store undiluted at 2-8°C for one month or (in aliquots) at -20°C for longer. Avoid repeated freezing and thawing.
Stability:	Shelf life: one year from despatch.
Predicted Protein Size:	~40 kDa
Gene Name:	C-X-C motif chemokine receptor 4
Database Link:	Entrez Gene 12767 Mouse Entrez Gene 60628 Rat Entrez Gene 7852 Human P61073



[View online »](#)

Background:

The C-X-C or alpha chemokine family is characterized by a pair of cysteine residues separated by a single amino acid and primarily functions as chemoattractants for neutrophils. The C-X-C family includes IL-8, NAP-2, MSGA and stromal cell derived factor-1 or SDF-1. SDF-1 was originally described as a pre-B cell stimulatory factor, but has now been shown to function as a potent chemoattractant for T cells and monocytes but not neutrophils. Receptors for the C-X-C family are G protein coupled, seven pass transmembrane domain proteins which include IL-8RA, IL-8RB and fusin (variously referred to as LESTR or CXCR-4). Fusin is highly homologous to the IL-8 receptors, sharing 37% sequence identity at the amino acid level. The IL-8 receptors bind to IL-8, NAP-2 and MSGA, while fusin binds to its cognate ligand, SDF-1. Fusin has been identified as the major coreceptor for T-tropic HIV-1 and SDF-1 has been shown to inhibit HIV-1 infection.

Synonyms:

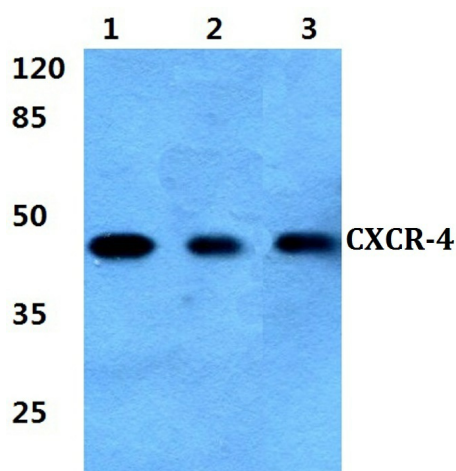
CXC-R4, CXCR-4, Fusin, LCR1, FB22, NPYRL, HM89, SDF1 receptor, LESTR

Protein Families:

Druggable Genome, ES Cell Differentiation/IPS, GPCR, Transmembrane

Protein Pathways:

Axon guidance, Chemokine signaling pathway, Cytokine-cytokine receptor interaction, Endocytosis, Leukocyte transendothelial migration

Product images:

Western blot (WB) analysis of CXCR-4 antibody at 1/500 dilution Lane 1: HeLa whole cell lysate Lane 2: Raw264.7 whole cell lysate Lane 3: H9C2 whole cell lysate.