

## Product datasheet for **AP01295PU-M**

### CCR7 Rabbit Polyclonal Antibody

#### Product data:

Product Type:	Primary Antibodies
Applications:	IF, WB
Recommended Dilution:	<b>Western blot:</b> 1/500-1/1000. <b>Immunofluorescence:</b> 1/50-1/200.
Reactivity:	Human
Host:	Rabbit
Clonality:	Polyclonal
Immunogen:	Synthetic peptide, corresponding to amino acids 280-330 of Human CCR7.
Specificity:	This antibody detects endogenous levels of CD197 / CCR7 (CKR-7) (region surrounding Arg209).
Formulation:	Phosphate buffered saline (PBS), pH 7.2 State: Aff - Purified State: Liquid purified Ig fraction Preservative: 0.05% Sodium azide
Concentration:	1.0 mg/ml
Purification:	Affinity-chromatography using epitope-specific immunogen and the purity is > 95% (by SDS-PAGE)
Conjugation:	Unconjugated
Storage:	Store undiluted at 2-8°C for one month or (in aliquots) at -20°C for longer. Avoid repeated freezing and thawing.
Stability:	Shelf life: one year from despatch.
Predicted Protein Size:	~ 43 kDa
Gene Name:	C-C motif chemokine receptor 7
Database Link:	<a href="#">Entrez Gene 1236 Human P32248</a>



[View online »](#)

**Background:**

C-C or  $\beta$  chemokine family members are characterized by a pair of adjacent cysteine residues and serve as potent chemoattractants and activators of monocytes and T cells. C-C chemokine receptor family members include CKR-1, CKR-2A, CKR-2B, CKR-3, CKR-4, CKR-5, CKR-6, CKR-7 and the Duffy blood group antigen. Each of these receptors are G protein-coupled, seven pass transmembrane domain proteins whose major physiological role is to function in the chemotaxis of T cells and phagocytic cells to areas of inflammation. However, this receptor family has also been shown to facilitate viral infection. Termed a co-receptor, CKR-5, along with CD4, has been shown to be a major receptor for HIV. CKR-5 tends to associate with macrophagetropic viruses, such as macrophage tropic HIV-1, while CKR-2B and CKR-3 bind a minority of viruses.

**Synonyms:**

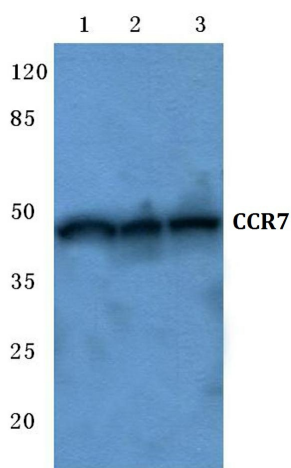
C-C chemokine receptor type 7, C-C CKR-7, CC-CKR-7, CCR-7, CMKBR7, EBI1, EVI1, BLR2

**Protein Families:**

Druggable Genome, GPCR, Transmembrane

**Protein Pathways:**

Chemokine signaling pathway, Cytokine-cytokine receptor interaction

**Product images:**


Western blot (WB) analysis of CCR7 antibody at 1/500 dilution Lane 1:Hela cell lysate Lane 2:sp2/0 cell lysate lysate Lane 3:PC12 cell lysate lysate