

## Product datasheet for **AP01294PU-M**

### Bombesin Receptor 3 (BRS3) Rabbit Polyclonal Antibody

#### Product data:

Product Type:	Primary Antibodies
Applications:	ELISA, IF, WB
Recommended Dilution:	<b>Western blot:</b> 1/500-1/1000. <b>Immunofluorescence:</b> 1/50-1/200.
Reactivity:	Human
Host:	Rabbit
Clonality:	Polyclonal
Immunogen:	Synthetic peptide, corresponding to amino acids 280-330 of Human BRS-3.
Specificity:	This antibody detects endogenous levels of BRS3 (region surrounding Cys203).
Formulation:	Phosphate buffered saline (PBS), pH 7.2 State: Aff - Purified State: Liquid purified Ig fraction Preservative: 0.05% Sodium azide
Concentration:	1.0 mg/ml
Purification:	Affinity-chromatography using epitope-specific immunogen and the purity is > 95% (by SDS-PAGE)
Conjugation:	Unconjugated
Storage:	Store undiluted at 2-8°C for one month or (in aliquots) at -20°C for longer. Avoid repeated freezing and thawing.
Stability:	Shelf life: one year from despatch.
Predicted Protein Size:	~ 44 kDa
Gene Name:	bombesin like receptor 3
Database Link:	<a href="#">Entrez Gene 680 Human P32247</a>

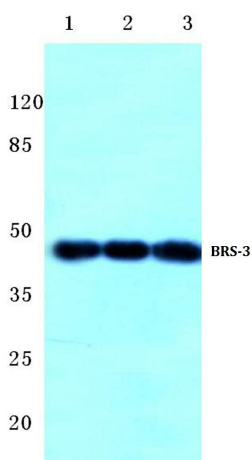
[View online »](#)

**Background:**

Bombesin receptor subtype-3 (BRS3) is an integral membrane protein belonging to the G protein-coupled receptor 1 family. The gene encoding for the BRS3 protein maps against chromosome Xq26-q28. BRS3 is important in sperm cell division, maturation and function. Its actions are mediated by G protein interactions which activate a phosphatidylinositol-calcium second messenger system. BRS3 is expressed in germ cells in testis and in lung carcinoma cells. Unlike other bombesin proteins, BRS3 does not seem to be detected in the gut and central nervous system, but has been found in rat gastrointestinal tract. Mice lacking the gene encoding for BRS3 develop obesity, suggesting that BRS3 may play a role in the regulation of plasma insulin concentration.

**Synonyms:**

BRS-3, Bombesin receptor subtype-3

**Product images:**


Western blot (WB) analysis of BRS-3 antibody at 1/500 dilution Lane 1:HEK293T cell lysate Lane 2:NIH-3T3 cell lysate Lane 3:H9C2 cell lysate