

## Product datasheet for **AP01292PU-M**

### 5HT5A receptor (HTR5A) Rabbit Polyclonal Antibody

#### Product data:

Product Type:	Primary Antibodies
Applications:	ELISA, IF, WB
Recommended Dilution:	<b>Western blot:</b> 1/500-1/1000. <b>Immunofluorescence:</b> 1/50-1/200.
Reactivity:	Human
Host:	Rabbit
Clonality:	Polyclonal
Immunogen:	Synthetic peptide, corresponding to amino acids N-terminus of Human SR-5A.
Specificity:	This antibody detects endogenous levels of Serotonin receptor-5A / SR-5A (region surrounding Leu35).
Formulation:	Phosphate buffered saline (PBS), pH 7.2 State: Aff - Purified State: Liquid purified Ig fraction Preservative: 0.05% Sodium azide
Concentration:	1.0 mg/ml
Purification:	Affinity-chromatography using epitope-specific immunogen and the purity is > 95% (by SDS-PAGE).
Conjugation:	Unconjugated
Storage:	Store undiluted at 2-8°C for one month or (in aliquots) at -20°C for longer. Avoid repeated freezing and thawing.
Stability:	Shelf life: one year from despatch.
Predicted Protein Size:	~ 40 kDa
Gene Name:	5-hydroxytryptamine receptor 5A
Database Link:	<a href="#">Entrez Gene 3361 Human P47898</a>



[View online »](#)

**Background:**

SR-5B, also designated 5-hydroxytryptamine (serotonin) receptor 5B (5-HT5B) and G protein-coupled receptor 134 (GPR134) is a receptor for the monoamine ligand serotonin (5-hydroxytryptamine, 5-HT). Serotonin is a neurotransmitter derived from serotonergic neurons in the central nervous system and enterochromaffin cells in the gastrointestinal tract. Serotonin actions are mediated by receptors that influence the biochemistry of depression, anxiety, sexuality and appetite. Rat SR-5B is present in serotonergic neurons in dorsal raphe (DR) and central superior nucleus (CS, median raphe nucleus). DR cell bodies showing SR-5B mRNA expression are abundant in the medial portions of the nucleus. CS coexpression of SR-5B receptor mRNA with serotonin transporter mRNA is high in the intermediate portions of the nucleus. Serotonin receptors include SR-1–7 (5HT1–7). Subtypes within the SR-1 group include SR-1A, -1B, -1D, -1E and -1F. Subtypes within the SR-2 group include SR-2A, -2B and -2C. Subtypes within the SR-5 group include SR-5A and -5B. SR receptors can couple to G proteins that act on either adenylate cyclase or phospholipase C (PLC). The SR-3 class of receptors are ion channels.

**Synonyms:**

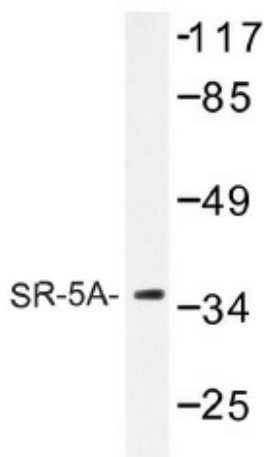
5-hydroxytryptamine receptor 5A, 5-HT5A, 5-HT-5A, 5-HT-5

**Protein Families:**

Druggable Genome, GPCR, Transmembrane

**Protein Pathways:**

Calcium signaling pathway, Neuroactive ligand-receptor interaction

**Product images:**


Western blot analysis with extracts from Jurkat cells using Serotonin receptor 5A (HTR5A) antibody.