

Product datasheet for **AP01289PU-N**

Laminin beta 2 (LAMB2) Rabbit Polyclonal Antibody

Product data:

Product Type:	Primary Antibodies
Applications:	ELISA, IHC, WB
Recommended Dilution:	Western blot: 1/500-1/1000. Immunohistochemistry on Paraffin Sections: 1/50-1/200.
Reactivity:	Human, Mouse, Rat
Host:	Rabbit
Clonality:	Polyclonal
Immunogen:	Synthetic peptide, corresponding to amino acids 80-130 of Human Laminin β -2.
Specificity:	This antibody detects endogenous levels of Laminin beta-2 protein. (region surrounding Cys91)
Formulation:	Phosphate buffered saline (PBS), pH 7.2. State: Aff - Purified State: Liquid purified Ig fraction (> 95% pure by SDS-PAGE) Preservative: 0.05% Sodium Azide
Concentration:	1.0 mg/ml
Purification:	Affinity Chromatography using epitope-specific immunogen
Conjugation:	Unconjugated
Storage:	Store undiluted at 2-8°C for one month or (in aliquots) at -20°C for longer. Avoid repeated freezing and thawing.
Stability:	Shelf life: one year from despatch.
Predicted Protein Size:	~210 kDa
Gene Name:	laminin subunit beta 2
Database Link:	Entrez Gene 3913 Human P55268



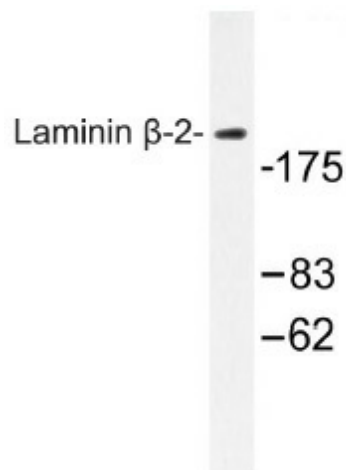
[View online »](#)

Background:

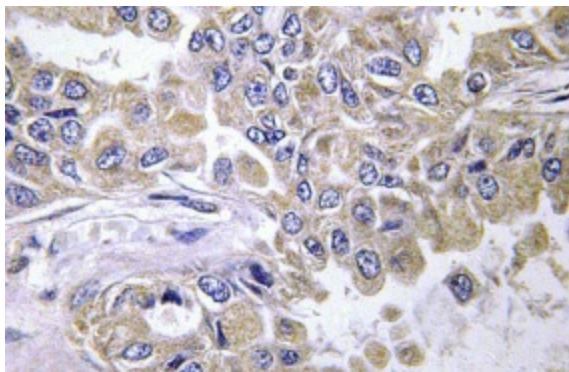
The Laminins comprise a growing family of disulfide-linked heterotrimers consisting of three genetically distinct polypeptide chains, designated alpha, beta and gamma. A major component of the basal lamina, Laminins play a crucial role in providing a scaffolding upon which tissues are assembled and which serves as a physical barrier separating specialized tissues. During embryogenesis and early development, cells migrate along basement membranes, which are required for the polarization of cells. The beta-2 laminin chain plays a role in melanoma spread, promoting tumor migration along the abluminal surface of vessel, a phenomenon which has been termed extra-vascular migratory metastasis.

Synonyms:

S-laminin, Laminin B1s chain, LAMB2, LAMS, Laminin-11 subunit beta, Laminin-14 subunit beta, Laminin-15 subunit beta, Laminin-3 subunit beta, Laminin-4 subunit beta, Laminin-7 subunit beta, Laminin-9 subunit beta

Product images:

Western blot analysis of Laminin beta-2 antibody in extracts from RAW264.7 cells.



Immunohistochemistry analysis of Laminin beta-2 antibody in paraffin-embedded lung carcinoma tissue.