

## Product datasheet for **AP01289PU-M**

### Laminin beta 2 (LAMB2) Rabbit Polyclonal Antibody

#### Product data:

|                         |  |
|-------------------------|--|
| Product Type:           | Primary Antibodies   |
| Applications:           | ELISA, IHC, WB   |
| Recommended Dilution:   | <b>Western blot:</b> 1/500-1/1000.<br><b>Immunohistochemistry on Paraffin Sections:</b> 1/50-1/200.  |
| Reactivity:             | Human, Mouse, Rat  |
| Host:                   | Rabbit   |
| Clonality:              | Polyclonal   |
| Immunogen:              | Synthetic peptide, corresponding to amino acids 80-130 of Human Laminin $\beta$ -2.  |
| Specificity:            | This antibody detects endogenous levels of Laminin beta-2 protein.<br>(region surrounding Cys91)   |
| Formulation:            | Phosphate buffered saline (PBS), pH 7.2.<br>State: Aff - Purified<br>State: Liquid purified Ig fraction (> 95% pure by SDS-PAGE)<br>Preservative: 0.05% Sodium Azide |
| Concentration:          | 1.0 mg/ml  |
| Purification:           | Affinity Chromatography using epitope-specific immunogen   |
| Conjugation:            | Unconjugated   |
| Storage:                | Store undiluted at 2-8°C for one month or (in aliquots) at -20°C for longer.<br>Avoid repeated freezing and thawing.   |
| Stability:              | Shelf life: one year from despatch.  |
| Predicted Protein Size: | ~210 kDa   |
| Gene Name:              | laminin subunit beta 2   |
| Database Link:          | <a href="#">Entrez Gene 3913 Human P55268</a>  |

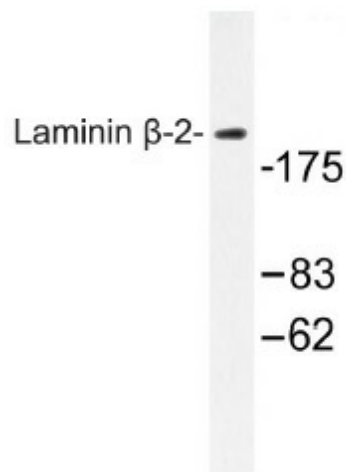
[View online »](#)

**Background:**

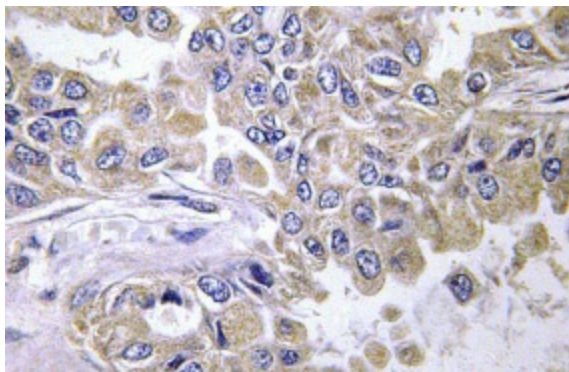
The Laminins comprise a growing family of disulfide-linked heterotrimers consisting of three genetically distinct polypeptide chains, designated alpha, beta and gamma. A major component of the basal lamina, Laminins play a crucial role in providing a scaffolding upon which tissues are assembled and which serves as a physical barrier separating specialized tissues. During embryogenesis and early development, cells migrate along basement membranes, which are required for the polarization of cells. The beta-2 laminin chain plays a role in melanoma spread, promoting tumor migration along the abluminal surface of vessel, a phenomenon which has been termed extra-vascular migratory metastasis.

**Synonyms:**

S-laminin, Laminin B1s chain, LAMB2, LAMS, Laminin-11 subunit beta, Laminin-14 subunit beta, Laminin-15 subunit beta, Laminin-3 subunit beta, Laminin-4 subunit beta, Laminin-7 subunit beta, Laminin-9 subunit beta

**Product images:**


Western blot analysis of Laminin beta-2 antibody in extracts from RAW264.7 cells.



Immunohistochemistry analysis of Laminin beta-2 antibody in paraffin-embedded lung carcinoma tissue.