

Product datasheet for **AP01284PU-N**

MAP4K3 (GLK) Rabbit Polyclonal Antibody

Product data:

Product Type:	Primary Antibodies
Applications:	ELISA, WB
Recommended Dilution:	Western Blot: 1/500-1/1000.
Reactivity:	Human, Mouse, Rat
Host:	Rabbit
Clonality:	Polyclonal
Immunogen:	Synthetic peptide, corresponding to the N-terminal of Human GLK.
Specificity:	GLK antibody detects endogenous levels of GLK protein. (region surrounding Gly4)
Formulation:	Phosphate buffered saline (PBS), pH~7.2 State: Aff - Purified State: Liquid purified Ig fraction (> 95% pure by SDS-PAGE). Preservative: 0.05% Sodium Azide
Concentration:	1.0 mg/ml
Purification:	Affinity Chromatography using epitope-specific immunogen.
Conjugation:	Unconjugated
Storage:	Store undiluted at 2-8°C for one month or (in aliquots) at -20°C for longer. Avoid repeated freezing and thawing.
Stability:	Shelf life: one year from despatch.
Predicted Protein Size:	~ 65 kDa
Gene Name:	mitogen-activated protein kinase kinase kinase kinase 3
Database Link:	<u>Entrez Gene 170920 Rat</u> <u>Entrez Gene 225028 Mouse</u> <u>Entrez Gene 8491 Human Q8IVH8</u>



[View online »](#)

Background:

Several mammalian kinases have been identified which exhibit sequence similarity to the *Saccharomyces cerevisiae* serine/threonine kinase STE20. STE20 is involved in relaying signals from G-protein coupled receptors to cytosolic MAP kinase cascades, and it lies upstream of a MAP kinase kinase kinase. Mammalian STE20-like kinases include GLK, KHS, NIK, YSK1, HPK1, Krs-1, Krs-2 and human GC kinase. GLK (for GC-like kinase) is an 885 amino acid protein that shares a high degree of homology with GC kinase and HPK1. Like many of the STE20-like kinases, GLK specifically activates the JNK pathway. Epistasis studies with dominant negative mutants of MEKK1 suggest that GLK functions upstream of MEKK1 in the JNK signaling pathway.

Synonyms:

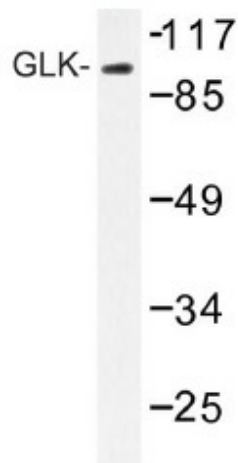
MAPK, RAB8IPL1, MEKKK 3

Protein Families:

Druggable Genome, Protein Kinase

Protein Pathways:

MAPK signaling pathway

Product images:

Western blot (WB) analysis of GLK antibody in extracts from K562 cells.