

Product datasheet for **AP01278PU-N**

Histone H2A.X (H2AFX) Rabbit Polyclonal Antibody

Product data:

Product Type:	Primary Antibodies
Applications:	ELISA, IHC, WB
Recommended Dilution:	Western blot: 1/500-1/1000. Immunofluorescence: 1/50-1/200 Immunohistochemistry on Paraffin sections: 1/50-1/200.
Reactivity:	Human
Host:	Rabbit
Clonality:	Polyclonal
Immunogen:	Synthetic peptide, corresponding to amino acids 100-150 of Human Histone H2A.X.
Specificity:	This antibody detects endogenous levels of Histone H2A.X protein (region surrounding Lys128).
Formulation:	Phosphate buffered saline (PBS), pH 7.2 State: Aff - Purified State: Liquid purified Ig fraction Preservative: 0.05% sodium azide
Concentration:	1.0 mg/ml
Purification:	Affinity-chromatography using epitope-specific immunogen and the purity is > 95% (by SDS-PAGE).
Conjugation:	Unconjugated
Storage:	Store undiluted at 2-8°C for one month or (in aliquots) at -20°C for longer. Avoid repeated freezing and thawing.
Stability:	Shelf life: one year from despatch.
Predicted Protein Size:	~ 15 kDa
Gene Name:	H2A histone family member X
Database Link:	Entrez Gene 3014 Human P16104



[View online »](#)

Background:

H2A.X is a member of the histone H2A family, 1 of 5 families of histone proteins involved in nucleosomal organization of chromatin. H2A.X is synthesised in G1 as well as S phase and is known to be important for recombination between immunoglobulin switch regions. A very early step in the response of mammalian cells to DNA double-strand breaks is the phosphorylation of histone H2A.X at serine 139 at the sites of DNA damage. There is a predicted acetylation at residue 1 and ubiquitination at residue 119. Phosphorylated H2A.X promotes DNA repair and maintains genomic stability.

Synonyms:

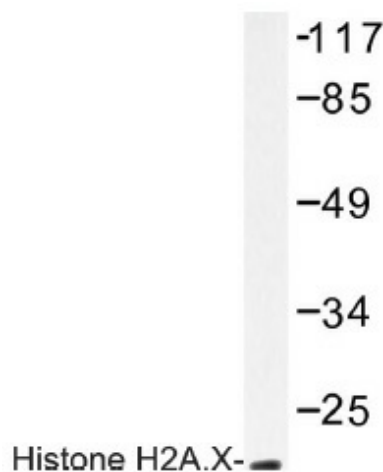
H2a/x, H2AFX, H2AX

Protein Families:

Druggable Genome

Protein Pathways:

Systemic lupus erythematosus

Product images:


Western blot analysis with extracts from human HT-29 cells using Histone H2A.X antibody.