

Product datasheet for **AP01276PU-N**

Hormone sensitive lipase (LIPE) Rabbit Polyclonal Antibody

Product data:

Product Type:	Primary Antibodies
Applications:	ELISA, IHC, WB
Recommended Dilution:	Western blot: 1/500-1/1000. Immunohistochemistry on paraffin sections 1/50-1/200.
Reactivity:	Human, Mouse, Rat
Host:	Rabbit
Clonality:	Polyclonal
Immunogen:	Synthetic peptide, corresponding to amino acids 520-570 of Human HSL.
Specificity:	This antibody detects endogenous levels of HSL protein. (region surrounding Ala546)
Formulation:	Phosphate buffered saline (PBS), pH~7.2 State: Aff - Purified State: Liquid purified Ig fraction (> 95% pure by SDS-PAGE). Preservative: 0.05% Sodium Azide
Concentration:	1.0 mg/ml
Purification:	Affinity Chromatography using epitope-specific immunogen.
Conjugation:	Unconjugated
Storage:	Store undiluted at 2-8°C for one month or (in aliquots) at -20°C for longer. Avoid repeated freezing and thawing.
Stability:	Shelf life: one year from despatch.
Predicted Protein Size:	□115.0 kDa
Gene Name:	lipase E, hormone sensitive type
Database Link:	Entrez Gene 16890 Mouse Entrez Gene 25330 Rat Entrez Gene 3991 Human Q05469



[View online »](#)

Background:

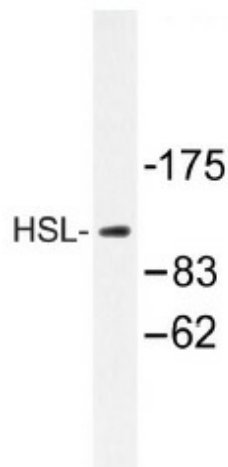
HSL (hormone-sensitive lipase), a cytosolic neutral lipase regulated by reversible phosphorylation, catalyzes the rate limiting step in triglyceride lipolysis. HSL hydrolyzes stored triglycerides to free fatty acids in adipose and heart tissues. In organs with steroidogenic tissues, such as small intestine, HSL converts cholesteryl esters to free cholesterol for steroid hormone production. HSL is highly expressed in jejunal enterocytes and in the mucosa of the small intestine. Two major isoforms of HSL have been described resulting from the use of alternative translational start codons. The short isoform is expressed in adipose tissue while the long isoform is expressed in steroidogenic tissues such as testis. The long isoform, often referred to as testicular HSL contains an N-terminus of approximately 300 amino acids not present in the short isoform of HSL.

Synonyms:

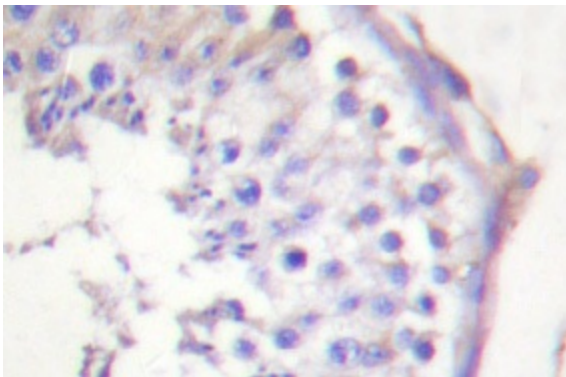
LIPE, Hormone-sensitive lipase, HSL, EC=3.1.1.79

Protein Pathways:

Insulin signaling pathway

Product images:

Western blot (WB) analysis of HSL antibody in extracts from Jurkat cells.



Immunohistochemistry (IHC) analyzes of HSL antibody in paraffin-embedded human tonsil tissue.