

Product datasheet for **AP01274PU-N**

NMBR Rabbit Polyclonal Antibody

Product data:

Product Type:	Primary Antibodies
Applications:	ELISA, IF, WB
Recommended Dilution:	Western blot: 1/500-1/1000. Immunofluorescence: 1/50-1/200.
Reactivity:	Human, Mouse, Rat
Host:	Rabbit
Clonality:	Polyclonal
Immunogen:	Synthetic peptide, corresponding to amino acids 235-280 of Human NMBR.
Specificity:	This antibody detects endogenous levels of Neuromedin B receptor / NMBR protein (region surrounding Leu264).
Formulation:	Phosphate buffered saline (PBS), pH 7.2 State: Aff - Purified State: Liquid purified Ig fraction Preservative: 0.05% Sodium azide
Concentration:	1.0 mg/ml
Purification:	Affinity-chromatography using epitope-specific immunogen and the purity is > 95% (by SDS-PAGE)
Conjugation:	Unconjugated
Storage:	Store undiluted at 2-8°C for one month or (in aliquots) at -20°C for longer. Avoid repeated freezing and thawing.
Stability:	Shelf life: one year from despatch.
Predicted Protein Size:	~ 43 kDa
Gene Name:	neuromedin B receptor
Database Link:	Entrez Gene 4829 Human P28336



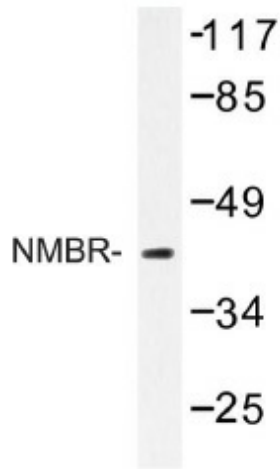
[View online »](#)

Background:

The bombesin receptor family includes the gastrin-releasing peptide (GRPR) and neuromedin B (NMBR) receptors. Both receptors are expressed in various brain regions and in the digestive tract. NMBR belongs to the G protein-coupled receptor 1 family. The gene encoding NMBR protein maps to chromosome 6q21-qter. NMBR, an integral membrane protein, binds neuromedin B, a mitogen and growth factor for gastrointestinal epithelial tissue and normal and neoplastic lung.

Synonyms:

NMB-R, NMBR

Product images:

Western blot analysis with extracts from 293 cells using Neuromedin B receptor antibody.