

## Product datasheet for **AP01270PU-N**

### Metabotropic Glutamate Receptor 5 (GRM5) Rabbit Polyclonal Antibody

#### Product data:

Product Type:	Primary Antibodies
Applications:	ELISA, IF, IHC, WB
Recommended Dilution:	<b>Western blot:</b> 1/500-1/1000. <b>Immunofluorescence:</b> 1/50-1/200. <b>Immunohistochemistry on Paraffin sections:</b> 1/50-1/200.
Reactivity:	Human, Mouse, Rat
Host:	Rabbit
Clonality:	Polyclonal
Immunogen:	Synthetic peptide, corresponding to amino acids 30-80 of Human mGluR-5.
Specificity:	This antibody detects endogenous levels of mGluR5 / GRM5 protein (region surrounding Lys56).
Formulation:	Phosphate buffered saline (PBS), pH 7.2. State: Aff - Purified State: Liquid purified Ig fraction Preservative: 0.05% Sodium azide
Concentration:	1.0 mg/ml
Purification:	Affinity-chromatography using epitope-specific immunogen and the purity is > 95% (by SDS-PAGE)
Conjugation:	Unconjugated
Storage:	Store undiluted at 2-8°C for one month or (in aliquots) at -20°C for longer. Avoid repeated freezing and thawing.
Stability:	Shelf life: one year from despatch.
Predicted Protein Size:	~ 132 kDa
Gene Name:	glutamate metabotropic receptor 5
Database Link:	<a href="#">Entrez Gene 2915 Human P41594</a>



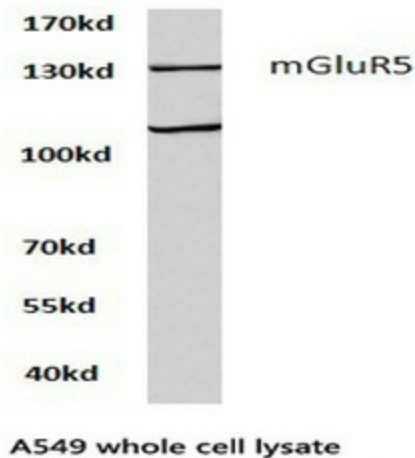
[View online »](#)

**Background:**

The mGluR proteins (metabotropic glutamate receptors) are members of the G protein-coupled receptor family and are functionally and pharmacologically distinct from the GluR proteins (ionotropic glutamate receptors). The eight currently known mGluR proteins are mediated by two G proteins with opposing regulation of adenylate cyclase pathways. The activities of mGluR-1 and mGluR-5 are mediated by a G protein that activates a phosphatidylinositolcalcium second messenger system and generates a calcium-activated chloride current. The remainder of the eight subtypes of mGluR have an activity mediated by a G protein that inhibits adenylate cyclase activity. mGluR-3, which may interact with GRASP, acts as a receptor for glutamate.

**Synonyms:**

Metabotropic glutamate receptor 5, GPRC1E, MGLUR5

**Product images:**

Western blot analysis with extracts from human A549 cells using mGluR5 / GRM5 antibody.