

## Product datasheet for **AP01269PU-S**

### Glucagon Receptor (GCGR) Rabbit Polyclonal Antibody

#### Product data:

Product Type:	Primary Antibodies
Applications:	IF, WB
Recommended Dilution:	<b>Western blot:</b> 1/500-1/1000. <b>Immunofluorescence:</b> 1/50-1/200.
Reactivity:	Human, Mouse, Rat
Host:	Rabbit
Clonality:	Polyclonal
Immunogen:	Synthetic peptide corresponding to amino acids 100-150 of Human Glucagon Receptor.
Specificity:	This antibody detects endogenous levels of Glucagon Receptor protein. (region surrounding Lys136)
Formulation:	Phosphate buffered saline (PBS), pH~7.2 State: Aff - Purified State: Liquid purified Ig fraction (> 95% pure by SDS-PAGE) Preservative: 15mM Sodium Azide
Concentration:	1.0 mg/ml
Purification:	Affinity Chromatography using epitope-specific immunogen
Conjugation:	Unconjugated
Storage:	Store undiluted at 2-8°C for one month or (in aliquots) at -20°C for longer. Avoid repeated freezing and thawing.
Stability:	Shelf life: one year from despatch.
Predicted Protein Size:	~54 kDa
Gene Name:	glucagon receptor
Database Link:	<u><a href="#">Entrez Gene 14527 Mouse</a></u> <u><a href="#">Entrez Gene 24953 Rat</a></u> <u><a href="#">Entrez Gene 2642 Human P47871</a></u>



[View online »](#)

**Background:**

Glucagon, a pancreatic hormone, functions as an antagonist to insulin, stimulating the conversion of glycogen to glucose and increasing blood sugar levels. GLP-1 functions as a transmitter in the central nervous system, inhibiting feeding and drinking behavior. Both glucagon and GLP-1 function through their specific binding to the glucagon receptor or GLP-1R, respectively. The glucagon receptor shows expression in liver, kidney and adipose tissue. The 56 GLP-1R expression primarily localizes to areas of the hypothalamus involved in feeding behavior. Both receptors and their ligands serve as potential targets for the therapeutic treatment of diabetes.

**Synonyms:**

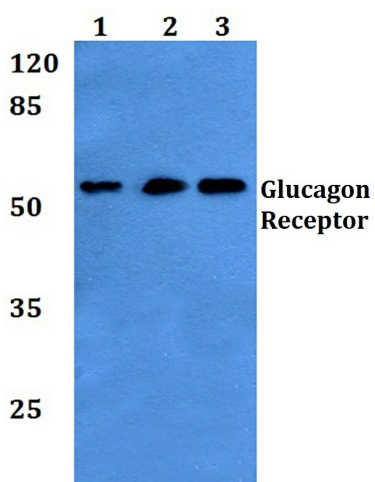
GCGR, GL-R

**Protein Families:**

Druggable Genome, GPCR, Transmembrane

**Protein Pathways:**

Neuroactive ligand-receptor interaction

**Product images:**

Western blot (WB) analysis of Glucagon Receptor antibody at 1/500 dilution. Lane 1: HEK293T whole cell lysate. Lane 2: Raw264.7 whole cell lysate. Lane 3: H9C2 whole cell lysate.