

Product datasheet for **AP01269PU-N**

Glucagon Receptor (GCGR) Rabbit Polyclonal Antibody

Product data:

Product Type:	Primary Antibodies
Applications:	IF, WB
Recommended Dilution:	Western blot: 1/500-1/1000. Immunofluorescence: 1/50-1/200.
Reactivity:	Human, Mouse, Rat
Host:	Rabbit
Clonality:	Polyclonal
Immunogen:	Synthetic peptide corresponding to amino acids 100-150 of Human Glucagon Receptor.
Specificity:	This antibody detects endogenous levels of Glucagon Receptor protein. (region surrounding Lys136)
Formulation:	Phosphate buffered saline (PBS), pH~7.2 State: Aff - Purified State: Liquid purified Ig fraction (> 95% pure by SDS-PAGE) Preservative: 15mM Sodium Azide
Concentration:	1.0 mg/ml
Purification:	Affinity Chromatography using epitope-specific immunogen
Conjugation:	Unconjugated
Storage:	Store undiluted at 2-8°C for one month or (in aliquots) at -20°C for longer. Avoid repeated freezing and thawing.
Stability:	Shelf life: one year from despatch.
Predicted Protein Size:	~54 kDa
Gene Name:	glucagon receptor
Database Link:	<u>Entrez Gene 14527 Mouse</u> <u>Entrez Gene 24953 Rat</u> <u>Entrez Gene 2642 Human P47871</u>



[View online »](#)

Background:

Glucagon, a pancreatic hormone, functions as an antagonist to insulin, stimulating the conversion of glycogen to glucose and increasing blood sugar levels. GLP-1 functions as a transmitter in the central nervous system, inhibiting feeding and drinking behavior. Both glucagon and GLP-1 function through their specific binding to the glucagon receptor or GLP-1R, respectively. The glucagon receptor shows expression in liver, kidney and adipose tissue. The 56 GLP-1R expression primarily localizes to areas of the hypothalamus involved in feeding behavior. Both receptors and their ligands serve as potential targets for the therapeutic treatment of diabetes.

Synonyms:

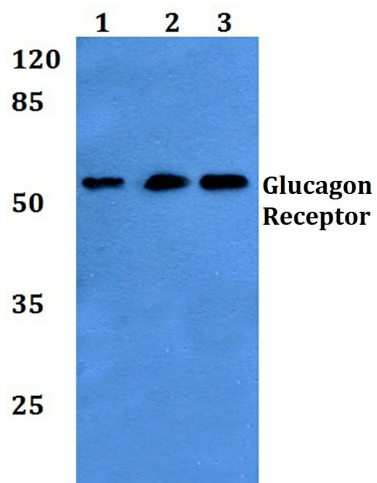
GCGR, GL-R

Protein Families:

Druggable Genome, GPCR, Transmembrane

Protein Pathways:

Neuroactive ligand-receptor interaction

Product images:

Western blot (WB) analysis of Glucagon Receptor antibody at 1/500 dilution Lane 1: HEK293T whole cell lysate Lane 2: Raw264.7 whole cell lysate Lane 3: H9C2 whole cell lysate.