

Product datasheet for **AP01267PU-M**

Frizzled 8 (FZD8) Rabbit Polyclonal Antibody

Product data:

Product Type:	Primary Antibodies
Applications:	IHC, WB
Recommended Dilution:	Western blot: 1/500-1/1000. Immunohistochemistry on Paraffin Sections: 1/50-1/200.
Reactivity:	Human, Mouse, Rat
Host:	Rabbit
Clonality:	Polyclonal
Immunogen:	Synthetic peptide corresponding to amino acids 490-537 of Human Frizzled-8.
Specificity:	This antibody detects endogenous levels of FDZ8 / Frizzled-8 protein (region surrounding Lys528).
Formulation:	Phosphate buffered saline (PBS), pH~7.2 State: Aff - Purified State: Liquid purified Ig fraction (> 95% by SDS-PAGE) Preservative: 0.05% Sodium Azide
Concentration:	1.0 mg/ml
Purification:	Affinity Chromatography using epitope-specific immunogen
Conjugation:	Unconjugated
Storage:	Store undiluted at 2-8°C for one month or (in aliquots) at -20°C for longer. Avoid repeated freezing and thawing.
Stability:	Shelf life: one year from despatch.
Predicted Protein Size:	~70 kDa
Gene Name:	frizzled class receptor 8
Database Link:	Entrez Gene 8325 Human Q9H461



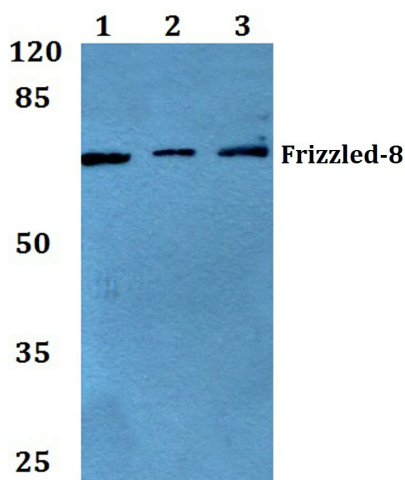
[View online »](#)

Background:

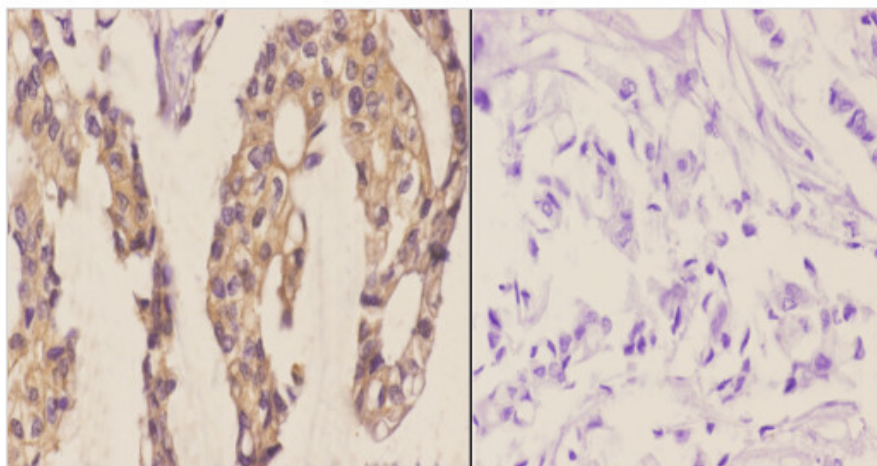
The frizzled gene, originally identified in *Drosophila melanogaster*, is involved in the development of tissue polarity. The mammalian homolog of frizzled, as well as several secreted mammalian frizzled-related proteins (FRPs), have been described. The frizzled proteins contain seven transmembrane domains, a cysteine-rich domain in the extracellular region and a carboxy-terminal Ser/Thr-xxx-Val motif. They function as receptors for Wnt and are generally coupled to G proteins. The cysteine-rich domain of frizzled-8 blocks endogenous Wnts and the effects of Wnt-1 and Wnt-5 on proliferation. The mouse frizzled-8 gene, which encodes a Wnt receptor, is a potent cancer-associated activator of the β -catenin-TCF pathway. The frizzled-8 gene contains no introns. Frizzled-8 mRNA has been detected in fetal brain and kidney, and also in adult pancreas, skeletal muscle, kidney and heart. Frizzled is highly expressed in HeLa S3 (cervical uterus cancer) cells and A549 lung cancer cells.

Synonyms:

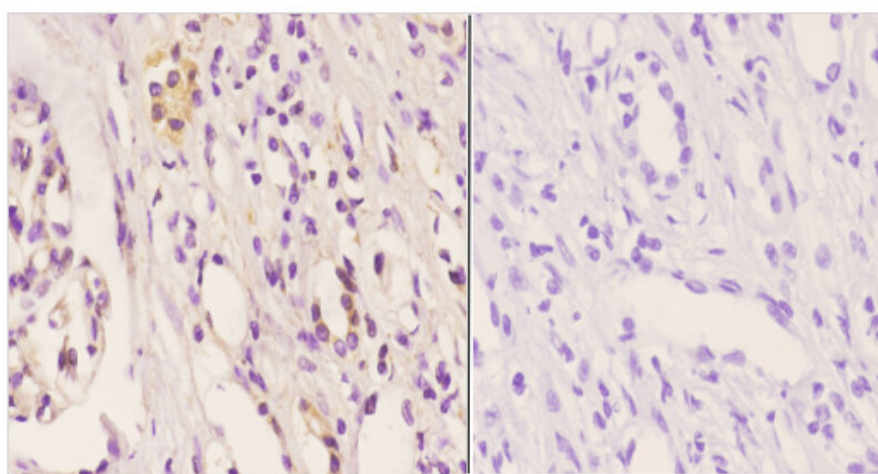
Fz-8, hFz8

Product images:


Western blot (WB) analysis of Frizzled-8 Antibody. at 1/500 dilution. Lane 1: HEK293T whole cell lysate. Lane 2: sp2/0 whole cell lysate. Lane 3: H9C2 whole cell lysate.



Immunohistochemistry (IHC) analyzes of Frizzled-8 Antibody in paraffin-embedded human breast carcinoma tissue at 1/50. showing cell membrane staining. Negative control (the right) Using PBS instead of primary antibody, secondary antibody is Goat Anti-Rab.



Immunohistochemistry (IHC) analyzes of Frizzled-8 Antibody in paraffin-embedded human kidney carcinoma tissue at 1/50. showing cell membrane staining. Negative control (the right) Using PBS instead of primary antibody, secondary antibody is Goat Anti-Rab.