

## Product datasheet for **AP01263PU-M**

### Parathyroid Hormone Receptor 1 (PTH1R) Rabbit Polyclonal Antibody

#### Product data:

Product Type:	Primary Antibodies
Applications:	IF, IHC, WB
Recommended Dilution:	<b>Western blot:</b> 1/500-1/1000. <b>Immunofluorescence:</b> 1/50-1/200. <b>Immunohistochemistry on Paraffin Sections:</b> 1/50-1/200.
Reactivity:	Human, Mouse, Rat
Host:	Rabbit
Clonality:	Polyclonal
Immunogen:	Synthetic peptide, corresponding to amino acids 150-200 of Human PTH.
Specificity:	This antibody detects endogenous levels of PTH/PTHrP-R protein. (region surrounding Leu187)
Formulation:	Phosphate buffered saline (PBS), pH~7.2 State: Aff - Purified State: Liquid purified Ig fraction (> 95% pure by SDS-PAGE) Preservative: 0.05% Sodium Azide
Concentration:	1.0 mg/ml
Purification:	Affinity Chromatography using epitope-specific immunogen
Conjugation:	Unconjugated
Storage:	Store undiluted at 2-8°C for one month or (in aliquots) at -20°C for longer. Avoid repeated freezing and thawing.
Stability:	Shelf life: one year from despatch.
Predicted Protein Size:	~52 , 66 kDa
Gene Name:	parathyroid hormone 1 receptor
Database Link:	<a href="#">Entrez Gene 5745 Human Q03431</a>



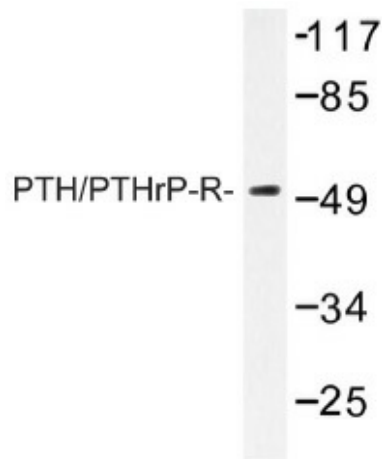
[View online »](#)

**Background:**

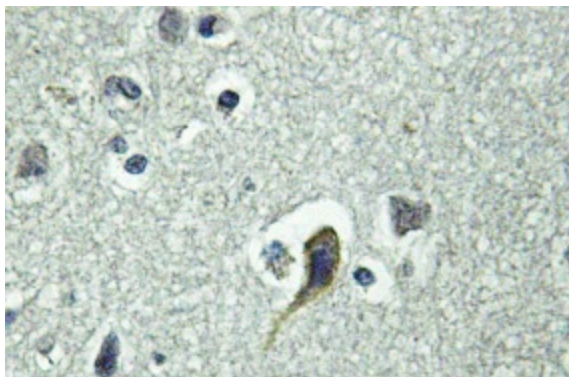
Parathyroid Hormone (PTH), which is also designated parathyrin, is an 84 amino acid single chain peptide that functions to regulate calcium metabolism by raising blood levels of calcium through various mechanisms. PTH stimulates bone formation to increase bone mass and strength in rats and humans. Within the PTH molecule, the essential activity is associated with the first 34 amino acids at the amino-terminus of the molecule. The gene encoding PTH maps to human chromosome 11p15.3-p15.1. Parathyroid hormone-related protein (PTH-rP) is an autocrine factor that is structurally related to PTH yet, unlike PTH, which is synthesized only by the parathyroid cells, PTH-rP is synthesized by several cell types. PTH-rP regulates endochondral bone development and epithelial-mesenchymal interactions during the formation of the mammary glands and teeth. Isolated from the culture medium of a human lung cancer cell line, PTH-rP produces PTH-like effects that are characterized as humoral hypercalcemia of malignancy.

**Synonyms:**

Parathyroid hormone 1 receptor, PTH/PTHrP type I receptor, PTH1R, PTHR, PTHR1

**Product images:**


Western blot analysis of PTH/PTHrP-R Antibody in extracts from Jurkat cells.



Immunohistochemistry (IHC) analyzes of PTH/PTHrP-R antibody v in paraffin-embedded human brain muscle tissue.