

Product datasheet for **AP01262PU-N**

Angiotensin II Type 1 Receptor (AGTR1) Rabbit Polyclonal Antibody

Product data:

Product Type:	Primary Antibodies
Applications:	ELISA, IF, WB
Recommended Dilution:	Western blot: 1/500-1/1000. Immunofluorescence: 1/50-1/200.
Reactivity:	Human, Mouse, Rat
Host:	Rabbit
Clonality:	Polyclonal
Immunogen:	Synthetic peptide, corresponding to amino acids 110-160 of Human AT1.
Specificity:	This antibody detects endogenous levels of Type-1 angiotensin II receptor (AT1) (region surrounding Leu143).
Formulation:	Phosphate buffered saline (PBS) State: Aff - Purified State: Liquid purified Ig fraction Preservative: 15mM Sodium azide
Concentration:	1.0 mg/ml
Purification:	Affinity-chromatography using epitope-specific immunogen
Conjugation:	Unconjugated
Storage:	Store undiluted at 2-8°C for one month or (in aliquots) at -20°C for longer. Avoid repeated freezing and thawing.
Stability:	Shelf life: one year from despatch.
Predicted Protein Size:	~ 40 kDa
Gene Name:	angiotensin II receptor type 1
Database Link:	Entrez Gene 185 Human P30556

[View online »](#)

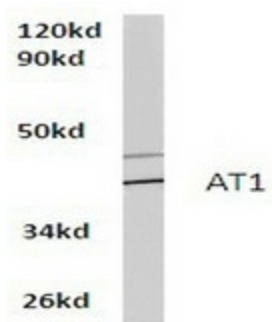
Background:

AT1 receptor for angiotensin II; Angiotensin II is a potent vasopressor hormone and a primary regulator of aldosterone secretion. It is an important effector controlling blood pressure and volume in the cardiovascular system and mediates the major cardiovascular effects of angiotensin II. It may play role in the generation of reperfusion arrhythmias following restoration of blood flow to ischemic or infarcted myocardium. Mediates its action by association with G proteins that activate a phosphatidylinositol-calcium second messenger system.

Synonyms:

AT1AR, AT1BR, AGTR1, AGTR1A, AGTR1B, AT2R1, AT2R1B

Product images:



Western blot analysis with mouse RAW246.7 whole cell lysate using Type-1 angiotensin II receptor (AT1) antibody.