

## Product datasheet for **AP01258PU-N**

### **GPR 150 (GPR150) Rabbit Polyclonal Antibody**

#### **Product data:**

|                         |  |
|-------------------------|--|
| Product Type:           | Primary Antibodies   |
| Applications:           | ELISA, IF, IHC, WB   |
| Recommended Dilution:   | <b>Western Blot:</b> 1/500-1/1000.<br><b>Immunofluorescence:</b> 1/50-1/200.<br><b>Immunohistochemistry on paraffin sections:</b> 1/50-1/200.                        |
| Reactivity:             | Human  |
| Host:                   | Rabbit   |
| Clonality:              | Polyclonal   |
| Immunogen:              | Synthetic peptide, corresponding to amino acids 360-410 of Human GPR150.   |
| Specificity:            | GPR150 antibody detects endogenous levels of GPR150 protein. (region surrounding Gln391)   |
| Formulation:            | Phosphate buffered saline (PBS), pH~7.2<br>State: Aff - Purified<br>State: Liquid purified Ig fraction (> 95% pure by SDS-PAGE).<br>Preservative: 0.05% Sodium Azide |
| Concentration:          | 1.0 mg/ml  |
| Purification:           | Affinity-chromatography using epitope-specific immunogen.  |
| Conjugation:            | Unconjugated   |
| Storage:                | Store undiluted at 2-8°C for one month or (in aliquots) at -20°C for longer.<br>Avoid repeated freezing and thawing.   |
| Stability:              | Shelf life: one year from despatch.  |
| Predicted Protein Size: | ~ 46 kDa   |
| Gene Name:              | G protein-coupled receptor 150   |
| Database Link:          | <a href="#">Entrez Gene 285601 Human Q8NGU9</a>  |



[View online »](#)

**Background:**

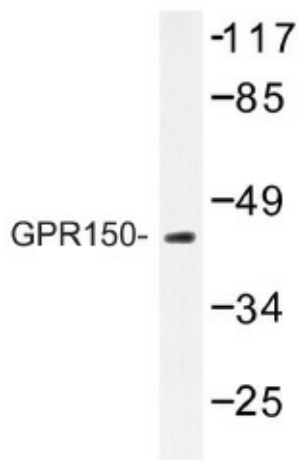
G protein-coupled receptors (GPCRs), also designated seven transmembrane (7TM) receptors and heptahelical receptors, are a protein family which interact with G proteins (heterotrimeric GTPases) to synthesize intracellular second messengers such as diacylglycerol, cyclic AMP, inositol phosphates and calcium ions. Their diverse biological functions range from vision and olfaction to neuronal and endocrine signaling and are involved in many pathological conditions. G protein receptor 128 (GPR128), a member of the secretin family of GPCRs with a GPS domain in its N-terminal domain, may mediate signaling processes to the interior of the cell via activation of G proteins. GPR128 represents an allopeptide which may be involved in T cell mediated transplant rejection as it is able to stimulate 2.102 T cells.

**Synonyms:**

G-protein coupled receptor 150

**Protein Families:**

Druggable Genome, Transmembrane

**Product images:**

Western blot (WB) analysis of GPR150 antibody in extracts from J HUVEC cells.