

Product datasheet for **AP01249PU-M**

PARK7 Rabbit Polyclonal Antibody

Product data:

Product Type:	Primary Antibodies
Applications:	IHC, WB
Recommended Dilution:	Western Blot: 1/500-1/1000. Immunohistochemistry on paraffin sections: 1/50-1/200.
Reactivity:	Human, Mouse, Rat
Host:	Rabbit
Clonality:	Polyclonal
Immunogen:	Synthetic peptide, corresponding to amino acids 50-97 of Human PARK7 / DJ-1.
Specificity:	This antibody detects endogenous levels of DJ-1 protein. (region surrounding Ala87)
Formulation:	Phosphate buffered saline (PBS), pH~7.2 State: Aff - Purified State: Liquid purified Ig fraction (> 95% pure by SDS-PAGE) Preservative: 0.05% Sodium Azide
Concentration:	1.0 mg/ml
Purification:	Affinity Chromatography using epitope-specific immunogen
Conjugation:	Unconjugated
Storage:	Store undiluted at 2-8°C for one month or (in aliquots) at -20°C for longer. Avoid repeated freezing and thawing.
Stability:	Shelf life: One year from despatch.
Predicted Protein Size:	~20 kDa
Gene Name:	Parkinsonism associated deglycase
Database Link:	Entrez Gene 11315 Human Q99497

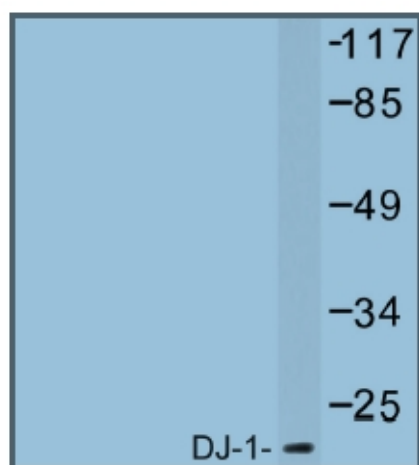
[View online »](#)

Background:

The DJ-1 gene encodes a highly-conserved protein which is implicated in a number of cell processes. DJ-1 was first identified as a novel oncogene that transformed mouse NIH/3T3 cells in cooperation with activated Ras. Additionally, DJ-1 was cloned in rat as SP22 or CAP-1, and found to be an infertility-related sperm protein whose expression is reduced in sperm treated with toxicants. DJ-1 also positively regulates the androgen receptor (AR) by forming a complex with PIAS α , a negative regulator of AR. The gene encoding human DJ-1 maps to chromosome 1p36.33-p36.12, a region identified as a hot spot of chromosome abnormalities in several tumor cells. Subsequently, mutations in the DJ-1 gene have been implicated in Parkinson's disease, and loss of DJ-1 function leads to neurodegeneration. DJ-1 is a ubiquitously expressed protein that is induced in response to growth stimuli and translocates from the cytoplasm to the nucleus during the S phase of the cell cycle.

Synonyms:

Oncogene DJ1, Parkinson disease protein 7

Product images:


Western blot analysis of DJ-1 Antibody in extracts from HT-29 cells.