

## Product datasheet for **AP01242PU-M**

### KAT2A Rabbit Polyclonal Antibody

#### Product data:

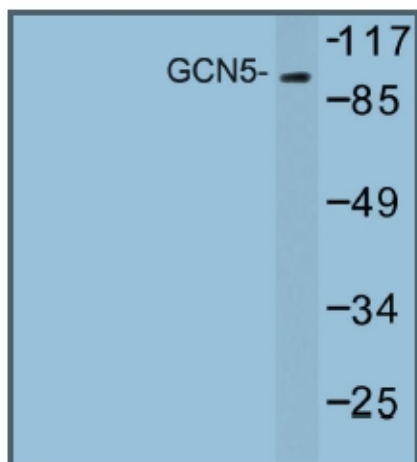
Product Type:	Primary Antibodies
Applications:	IHC, WB
Recommended Dilution:	<b>Western Blot:</b> 1/500-1/1000. <b>Immunohistochemistry on paraffin sections:</b> 1/50-1/200.
Reactivity:	Human, Mouse
Host:	Rabbit
Clonality:	Polyclonal
Immunogen:	Synthetic peptide, corresponding to amino acids 400-448 of Human AP-2γ.
Specificity:	This antibody detects endogenous levels of GCN5 protein.
Formulation:	Phosphate buffered saline (PBS), pH~7.2 State: Aff - Purified State: Liquid purified Ig fraction (> 95% pure by SDS-PAGE). Preservative: 0.05% Sodium Azide
Concentration:	1.0 mg/ml
Purification:	Affinity Chromatography using epitope-specific immunogen.
Conjugation:	Unconjugated
Storage:	Store undiluted at 2-8°C for one month or (in aliquots) at -20°C for longer. Avoid repeated freezing and thawing.
Stability:	Shelf life: One year from despatch.
Predicted Protein Size:	~45 kDa
Gene Name:	lysine acetyltransferase 2A
Database Link:	<a href="#">Entrez Gene 2648 Human Q92830</a>
Background:	KAT2A / GCN5 is a transcriptional co-activator that has histone acetyltransferase activity. It exhibits significant histone acetyltransferase activity with core histones but not with nucleosome core particles. KAT2A is a component of the TFTC-HAT and STAGA complexes. KAT2A is also recruited by the viral protein Tat during HIV infection, inducing chromatin remodelling of proviral genes.



[View online »](#)

**Synonyms:** Histone acetyltransferase KAT2A, Histone acetyltransferase GCN5, HsGCN5, HGCN5, Lysine acetyltransferase 2A, STAF97

**Product images:**



Western blot (WB) analysis of GCN5 antibody in extracts from mouse brain.