

Product datasheet for **AP01241PU-N**

AP2 gamma (TFAP2C) Rabbit Polyclonal Antibody

Product data:

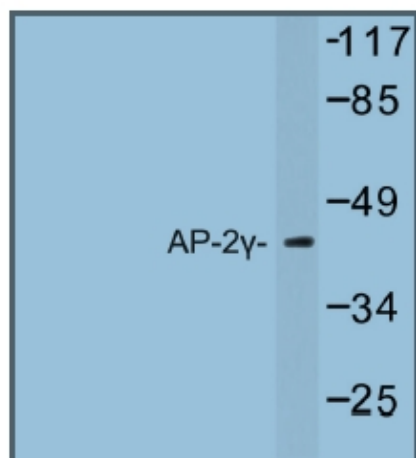
| | |
|-------------------------|--|
| Product Type: | Primary Antibodies |
| Applications: | IHC, WB |
| Recommended Dilution: | Western Blot: 1/500-1/1000. Immunohistochemistry on paraffin sections: 1/50-1/200. |
| Reactivity: | Human, Mouse, Rat |
| Host: | Rabbit |
| Clonality: | Polyclonal |
| Immunogen: | Synthetic peptide, corresponding to amino acids 400-448 of Human AP-2γ. |
| Specificity: | This antibody detects endogenous levels of AP-2 gamma protein. (region surrounding Ala436) |
| Formulation: | Phosphate buffered saline (PBS), pH~7.2 State: Aff - Purified State: Liquid purified Ig fraction (> 95% pure by SDS-PAGE). Preservative: 0.05% Sodium Azide |
| Concentration: | 1.0 mg/ml |
| Purification: | Affinity Chromatography using epitope-specific immunogen. |
| Conjugation: | Unconjugated |
| Storage: | Store undiluted at 2-8°C for one month or (in aliquots) at -20°C for longer. Avoid repeated freezing and thawing. |
| Stability: | Shelf life: One year from despatch. |
| Predicted Protein Size: | ~45 kDa |
| Database Link: | Entrez Gene 7022 Human Q92754 |
| Background: | AP2 gamma is a sequence-specific DNA-binding protein that interacts with inducible viral and cellular enhancer elements to regulate transcription of selected genes. AP-2 factors bind to the consensus sequence 5'-GCCNNNGGC-3' and activate genes involved in a large spectrum of important biological functions including proper eye, face, body wall, limbs and neural tube development. They also suppress a number of genes including MCAM/MUC18, C/EBP alpha and MYC. |



[View online »](#)

Synonyms: Transcription factor AP2 gamma, ERF-1, ERF1

Product images:



Western blot (WB) analysis of AP-2 gamma antibody in extracts from HepG2 cells.