

## Product datasheet for **AP01238PU-N**

### **RHOH Rabbit Polyclonal Antibody**

#### **Product data:**

Product Type:	Primary Antibodies
Applications:	IF, IHC, WB
Recommended Dilution:	<b>Western Blot:</b> 1/500-1/1000. <b>Immunofluorescence:</b> 1/50-1/200. <b>Immunohistochemistry on Paraffin Sections:</b> 1/50-1/200.
Reactivity:	Human, Mouse, Rat
Host:	Rabbit
Clonality:	Polyclonal
Immunogen:	Synthetic peptide, corresponding to amino acids 102-152 of Human Rho H.
Specificity:	This antibody detects endogenous levels of Rho H protein. (region surrounding Met134)
Formulation:	Phosphate buffered saline (PBS), pH~7.2 State: Aff - Purified State: Liquid purified Ig fraction (> 95% pure by SDS-PAGE) Preservative: 0.05% Sodium Azide
Concentration:	1.0 mg/ml
Purification:	Affinity Chromatography using epitope-specific immunogen
Conjugation:	Unconjugated
Storage:	Store undiluted at 2-8°C for one month or (in aliquots) at -20°C for longer. Avoid repeated freezing and thawing.
Stability:	Shelf life: One year from despatch.
Predicted Protein Size:	~21 kDa
Gene Name:	ras homolog family member H
Database Link:	<a href="#">Entrez Gene 399 Human Q15669</a>



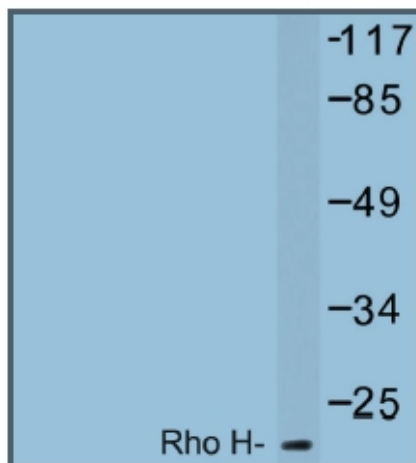
[View online »](#)

**Background:**

The Rho subfamily of small GTP-binding proteins mediates many fundamental cellular functions. The commonly studied members (Rho, Rac, and CDC42) regulate actin reorganization and affect diverse cellular responses, including adhesion, cytokinesis, and motility. RhoH, also known as TTF (Translocation Three Four), Rho-related GTP-binding protein and ras homolog gene family member H, is unlike most other small G proteins. Most small G proteins are expressed ubiquitously, however, Rho H is expressed only in hemopoietic cells and tissues. Translocations and a high frequency of Rho H mutation have been detected in primary lymphoma cells. Rho H expression has also been observed in activated neutrophils. RhoH is GTPase deficient, remaining in a GTP-bound activated state without cycling. Rho H may be involved in the functional differentiation of T cells and in cytoskeleton organization. The RhoH/TTF (ARHH) gene maps to chromosome 4p13 and encodes a 191 -amino acid polypeptide.

**Synonyms:**

ARHH, TTF

**Product images:**

Western blot analysis of Rho H Antibody in extracts from HT-29 cells.