

Product datasheet for **AP01237PU-N**

MUM1 (IRF4) Rabbit Polyclonal Antibody

Product data:

| | |
|-------------------------|--|
| Product Type: | Primary Antibodies |
| Applications: | IF, IHC, WB |
| Recommended Dilution: | Western Blot: 1/500-1/1000. Immunofluorescence: 1/50-1/200. Immunohistochemistry on Paraffin Sections: 1/50-1/200. |
| Reactivity: | Human, Mouse |
| Host: | Rabbit |
| Clonality: | Polyclonal |
| Immunogen: | Synthetic peptide, corresponding to amino acids 262-318 of Human IRF-4. |
| Specificity: | This antibody detects endogenous levels of IRF-4 protein. (region surrounding Tyr294) |
| Formulation: | Phosphate buffered saline (PBS), pH~7.2 State: Aff - Purified State: Liquid purified Ig fraction (> 95% pure by SDS-PAGE). Preservative: 15 mM Sodium Azide |
| Concentration: | 1.0 mg/ml |
| Purification: | Affinity Chromatography using epitope-specific immunogen. |
| Conjugation: | Unconjugated |
| Storage: | Store undiluted at 2-8°C for one month or (in aliquots) at -20°C for longer. Avoid repeated freezing and thawing. |
| Stability: | Shelf life: One year from despatch. |
| Predicted Protein Size: | ~52 kDa |
| Gene Name: | interferon regulatory factor 4 |
| Database Link: | Entrez Gene 3662 Human Q15306 |



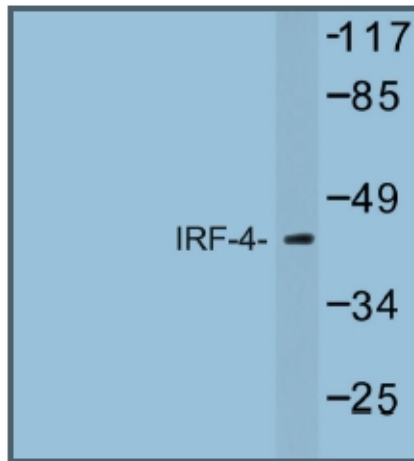
[View online »](#)

Background:

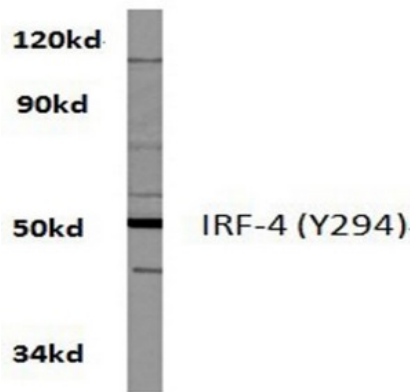
Transcriptional activator. Binds to the interferon-stimulated response element (ISRE) of the MHC class I promoter. Binds the immunoglobulin lambda light chain enhancer, together with PU.1. Probably plays a role in ISRE-targeted signal transduction mechanisms specific to lymphoid cells. Involved in CD8+ dendritic cell differentiation by forming a complex with the BATF-JUNB heterodimer in immune cells, leading to recognition of AICE sequence (5'-TGAnTCA/GAAA-3'), an immune-specific regulatory element, followed by cooperative binding of BATF and IRF4 and activation of genes.

Synonyms:

Interferon regulatory factor 4, NF-EM5, MUM1, LSIRF

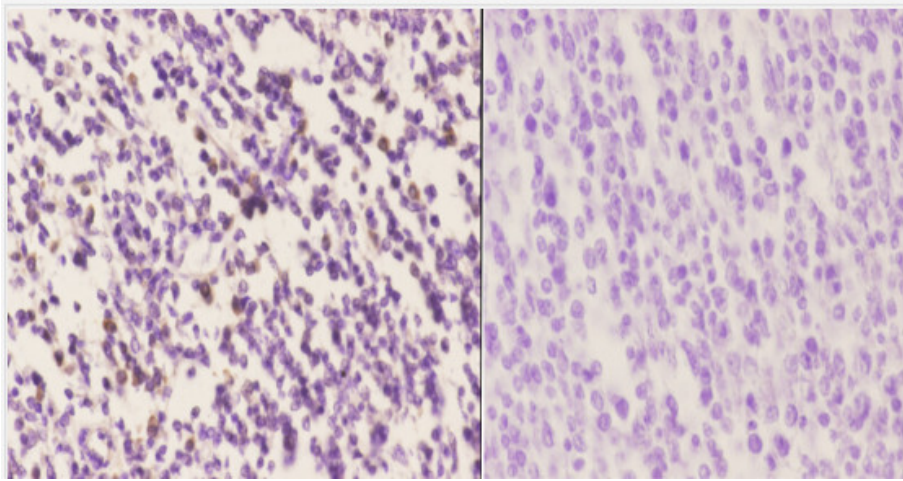
Product images:


Western blot (WB) analysis of IRF-4 antibody in extracts from HeLa cells.



Western blot (WB) analysis of IRF-4 antibody in extracts from A549 cells.

A549 whole cell lysate
IRF-4 (Y294) pAb at 1:500 dilution



Immunohistochemistry (IHC) analysis of IRF-4 antibody in paraffin-embedded human tonsil carcinoma tissue at 1:50, showing nucleus staining. Negative control (the right) Using PBS instead of primary antibody, secondary antibody is Goat Anti-Rabbit IgG-biotin followed by avidin peroxidase.