

Product datasheet for **AP01229PU-N**

Glucosidase 2 subunit beta (PRKCSH) Rabbit Polyclonal Antibody

Product data:

Product Type:	Primary Antibodies
Applications:	IF, WB
Recommended Dilution:	Western Blot: 1/500-1/1000. Immunofluorescence: 1/50-1/200.
Reactivity:	Human, Mouse
Host:	Rabbit
Clonality:	Polyclonal
Immunogen:	Synthetic peptide, corresponding to amino acids 90-130 of Human Glucosidase II β .
Specificity:	This antibody detects endogenous levels of Glucosidase II beta protein. (region surrounding Lys117)
Formulation:	Phosphate buffered saline (PBS), pH~7.2 State: Aff - Purified State: Liquid purified Ig fraction (> 95% pure by SDS-PAGE). Preservative: 0.05% Sodium Azide
Concentration:	1.0 mg/ml
Purification:	Affinity Chromatography using epitope-specific immunogen.
Conjugation:	Unconjugated
Storage:	Store undiluted at 2-8°C for one month or (in aliquots) at -20°C for longer. Avoid repeated freezing and thawing.
Stability:	Shelf life: One year from despatch.
Predicted Protein Size:	~59 kDa
Gene Name:	protein kinase C substrate 80K-H
Database Link:	Entrez Gene 5589 Human P14314



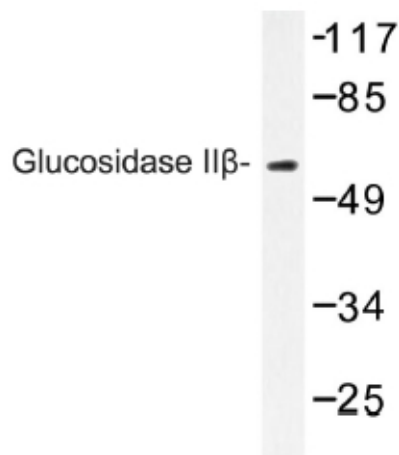
[View online »](#)

Background:

Trimming of glucoses from N-linked core glycans on newly synthesized glycoproteins occurs sequentially through the action of Glucosidases I and II in the endoplasmic reticulum (ER). Glucosidase II is an ER-localized enzyme that contains alpha and beta subunits (Glucosidase IIalpha and Glucosidase IIbeta). The alpha and beta subunits form a defined heterodimeric complex with a molecular weight about 161 kDa. Glucosidase IIalpha is the catalytic core of the enzyme and can function independently of the beta subunit. The sequence of Glucosidase IIbeta encodes protein rich in glutamic and aspartic acid with a putative ER retention signal (HDEL) at the C terminus. The phosphorylated form of Glucosidase IIbeta is localized in the plasma membrane and is highly expressed in FGF stimulated fibroblasts and epidermal carcinoma cells. Glucosidase IIbeta was first purified from a human carcinoma cell line as a potential substrate for protein kinase C. Through the HDEL signal at the C-terminus, Glucosidase IIbeta retains the complete complex in the ER.

Synonyms:

Glucosidase II beta, PRKCSH, G19P1, 80K-H protein

Product images:

Western blot (WB) analysis of Glucosidase II beta antibody in extracts from mouse brain.