

## Product datasheet for **AP01228PU-M**

### TACC1 Rabbit Polyclonal Antibody

#### Product data:

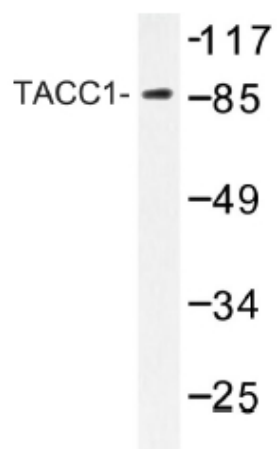
Product Type:	Primary Antibodies
Applications:	IF, IHC, WB
Recommended Dilution:	<b>Western blot:</b> 1/500-1/1000. <b>Immunofluorescence:</b> 1/50-1/200. <b>Immunohistochemistry on paraffin sections:</b> 1/50-1/200.
Reactivity:	Human, Mouse
Host:	Rabbit
Clonality:	Polyclonal
Immunogen:	Synthetic peptide, corresponding to amino acids 11-60 of Human TACC1.
Specificity:	This antibody detects endogenous levels of TACC1 protein. (region surrounding Glu41)
Formulation:	Phosphate buffered saline (PBS), pH~7.2 State: Aff - Purified State: Liquid purified Ig fraction (> 95% pure by SDS-PAGE). Preservative: 0.05% Sodium Azide
Concentration:	1.0 mg/ml
Purification:	Affinity Chromatography using epitope-specific immunogen.
Conjugation:	Unconjugated
Storage:	Store undiluted at 2-8°C for one month or (in aliquots) at -20°C for longer. Avoid repeated freezing and thawing.
Stability:	Shelf life: One year from despatch.
Predicted Protein Size:	~87 kDa
Gene Name:	transforming acidic coiled-coil containing protein 1
Database Link:	<a href="#">Entrez Gene 6867 Human O75410</a>
Background:	TACC1 is thought to be involved in the processes that promote cell division prior to the formation of differentiated tissues. It interacts with KIAA0097/CH-TOG and with the oncogenic transcription factor YEATS4, in addition to the Aurora kinases A and B (STK6 and AURKB) and LSM7, TDRD7 and SNRPG.



[View online »](#)

Synonyms: KIAA1103

### Product images:



Western blot (WB) analysis of TACC1 antibody in extracts from K562 cells.