

## Product datasheet for **AP01223PU-M**

### IL7R alpha (IL7R) Rabbit Polyclonal Antibody

#### Product data:

Product Type:	Primary Antibodies
Applications:	WB
Recommended Dilution:	<b>Western Blot:</b> 1/500-1/1000.
Reactivity:	Human, Mouse
Host:	Rabbit
Clonality:	Polyclonal
Immunogen:	Synthetic peptide, corresponding to amino acids 410-460 of Human IL7R.
Specificity:	This antibody detects endogenous levels of IL-7R protein. (region surrounding Gln445)
Formulation:	Phosphate buffered saline (PBS), pH~7.2 State: Aff - Purified State: Liquid purified Ig fraction (> 95% pure by SDS-PAGE). Preservative: 0.05% Sodium Azide
Concentration:	1.0 mg/ml
Purification:	Affinity Chromatography using epitope-specific immunogen.
Conjugation:	Unconjugated
Storage:	Store undiluted at 2-8°C for one month or (in aliquots) at -20°C for longer. Avoid repeated freezing and thawing.
Stability:	Shelf life: One year from despatch.
Predicted Protein Size:	~52 kDa
Gene Name:	interleukin 7 receptor
Database Link:	<a href="#">Entrez Gene 3575 Human P16871</a>



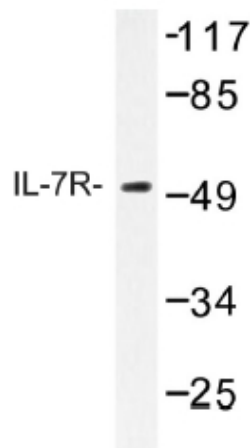
[View online »](#)

**Background:**

The biological effects of IL7 are mediated by the binding of IL7 to the specific cell surface receptor. The functional high-affinity IL7 receptor consists of an alpha chain and a gamma chain. Both IL7R alpha and IL7R gamma are members of the hematopoietin receptor superfamily. IL7R alpha cDNA encodes a precursor protein containing a signal peptide, an extracellular ligand binding domain, a transmembrane region, and a cytoplasmic region. IL7R alpha transcripts have been observed in spleen, thymus, fetal liver, developing T cells, B cells, mature T cells, and bone marrow derived macrophages.

**Synonyms:**

Interleukin-7 receptor subunit alpha, IL-7R-alpha, IL7 receptor alpha

**Product images:**


Western blot (WB) analysis of IL-7R antibody in extracts from K562 cells treated with insulin 0.01U.