

Product datasheet for **AP01221PU-N**

NPY1R Rabbit Polyclonal Antibody

Product data:

Product Type:	Primary Antibodies
Applications:	IF, WB
Recommended Dilution:	Western Blot: 1/500-1/1000. Immunofluorescence: 1/50-1/200.
Reactivity:	Human, Mouse, Rat
Host:	Rabbit
Clonality:	Polyclonal
Immunogen:	Synthetic peptide, corresponding to amino acids 225-270 of Human NPY1-R.
Specificity:	This antibody detects endogenous levels of Neuropeptide Y Receptor 1 (NPY1-R) protein. (region surrounding Arg254)
Formulation:	Phosphate buffered saline (PBS), pH~7.2 State: Aff - Purified State: Liquid purified Ig fraction (> 95% pure by SDS-PAGE) Preservative: 0.05% Sodium Azide
Concentration:	1.0 mg/ml
Purification:	Affinity Chromatography using epitope-specific immunogen
Conjugation:	Unconjugated
Storage:	Store undiluted at 2-8°C for one month or (in aliquots) at -20°C for longer. Avoid repeated freezing and thawing.
Stability:	Shelf life: one year from despatch.
Predicted Protein Size:	~44 kDa
Gene Name:	neuropeptide Y receptor Y1
Database Link:	<u>Entrez Gene 18166 Mouse</u> <u>Entrez Gene 29358 Rat</u> <u>Entrez Gene 4886 Human P25929</u>



[View online »](#)

Background:

Neuropeptide Y (NPY) is one of the most abundant neuropeptides in the mammalian nervous system and exhibits a diverse range of important physiologic activities, including effects on psychomotor activity, food intake, regulation of central endocrine secretion, and potent vasoactive effects on the cardiovascular system. There are two major subtypes of NPY (Y1 and Y2). The NPY Y1 receptors have been identified in a variety of tissues, including brain, spleen, small intestine, kidney, testis, placenta, breast, colon, ganglion, heart, and aortic smooth muscle. The Y2 receptor is found mainly in the central nervous system. NPY receptors are a member of the G protein-coupled receptor superfamily.

Synonyms:

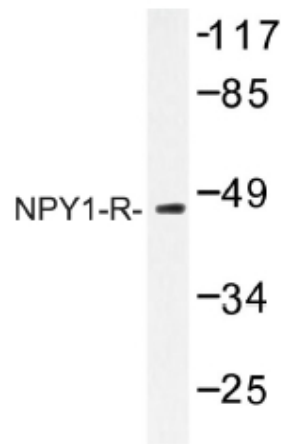
NPYR, NPYY1, Neuropeptide Y receptor 1

Protein Families:

Druggable Genome, GPCR, Transmembrane

Protein Pathways:

Neuroactive ligand-receptor interaction

Product images:

Western blot (WB) analysis of NPY1-R antibody in extracts from NIH-3T3 cells.