

## Product datasheet for **AP01220PU-S**

### Neurokinin A Receptor (TACR2) Rabbit Polyclonal Antibody

#### Product data:

Product Type:	Primary Antibodies
Applications:	IF, WB
Recommended Dilution:	<b>Western Blot:</b> 1/500-1/1000. <b>Immunofluorescence:</b> 1/50-1/200.
Reactivity:	Human
Host:	Rabbit
Clonality:	Polyclonal
Immunogen:	Synthetic peptide, corresponding to amino acids 320-370 of Human NK-2R.
Specificity:	This antibody detects endogenous levels of NK-2R protein. (region surrounding Pro340)
Formulation:	Phosphate buffered saline (PBS), pH~7.2 State: Aff - Purified State: Liquid purified Ig fraction (> 95% pure by SDS-PAGE). Preservative: 0.05% Sodium Azide
Concentration:	1.0 mg/ml
Purification:	Affinity Chromatography using epitope-specific immunogen.
Conjugation:	Unconjugated
Storage:	Store undiluted at 2-8°C for one month or (in aliquots) at -20°C for longer. Avoid repeated freezing and thawing.
Stability:	Shelf life: One year from despatch.
Predicted Protein Size:	~ 44 kDa
Gene Name:	tachykinin receptor 2
Database Link:	<a href="#">Entrez Gene 6865 Human P21452</a>



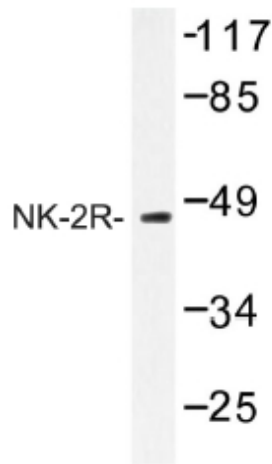
[View online »](#)

**Background:**

This gene belongs to a family of genes that function as receptors for tachykinins. Receptor affinities are specified by variations in the 5'-end of the sequence. The receptors belonging to this family are characterized by interactions with G proteins and 7 hydrophobic transmembrane regions. This gene encodes the receptor for the tachykinin neuropeptide substance K, also referred to as neurokinin A. It is associated with G proteins that activate a phosphatidylinositol-calcium second messenger system. It has been reported to be expressed in trachea, lung, and gastrointestinal tract. ESTs have been isolated from human heart/melanocyte/uterus, prostate, and uterus libraries.

**Synonyms:**

Substance-K receptor, NKNAR, TAC2R, NK-2 receptor, NK-2R, Neurokinin A receptor, Tachykinin receptor 2

**Product images:**

Western blot (WB) analysis of NK-2R antibody in extracts from NIH-3T3 cells.