

Product datasheet for **AP01215PU-N**

FSH Receptor (FSHR) Rabbit Polyclonal Antibody

Product data:

Product Type:	Primary Antibodies
Applications:	IF, WB
Recommended Dilution:	Western Blot: 1/500-1/1000. Immunofluorescence: 1/50-1/200.
Reactivity:	Human, Mouse, Rat
Host:	Rabbit
Clonality:	Polyclonal
Immunogen:	Synthetic peptide, corresponding to amino acids 215-265 of Human FSHR.
Specificity:	This antibody detects endogenous levels of FSHR protein. (region surrounding Arg247)
Formulation:	Phosphate buffered saline (PBS), pH~7.2 State: Aff - Purified State: Liquid purified Ig fraction (> 95% pure by SDS-PAGE). Preservative: 15 mM Sodium Azide
Concentration:	1.0 mg/ml
Purification:	Affinity Chromatography using epitope-specific immunogen.
Conjugation:	Unconjugated
Storage:	Store the antibody undiluted at 2-8°C for one month or (in aliquots) at -20°C for longer. Avoid repeated freezing and thawing.
Stability:	Shelf life: One year from despatch.
Predicted Protein Size:	~78 kDa
Gene Name:	follicle stimulating hormone receptor
Database Link:	Entrez Gene 2492 Human P23945



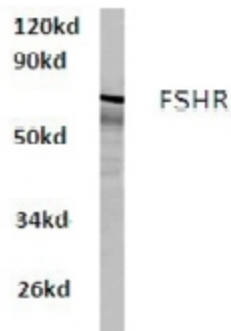
[View online »](#)

Background:

Follicle-stimulating hormone (FSH), also called follitropin, belongs to the family of glycoprotein hormones that also includes luteinizing hormone and thyroid-stimulating hormone. These hormones are secreted by the pituitary and exist as heterodimers, consisting of a common alpha subunit and a homologous but distinct beta subunit. While the alpha subunit of FSH is involved in the binding of FSH to the receptor, follicle-stimulating hormone receptor (FSHR), the beta subunit stabilizes this interaction. This heterodimer regulates a variety of processes, including secretion, post-translational modification and signal transduction. Both FSH and FSHR are localized to Sertoli cells.

Synonyms:

Follicle-stimulating hormone receptor, FSH-R, LGR1, Follitropin receptor

Product images:

Western blot (WB) analysis of FSHR antibody in extracts from HeLa cells.