

## Product datasheet for **AP01214PU-S**

### EMR2 (ADGRE2) Rabbit Polyclonal Antibody

#### Product data:

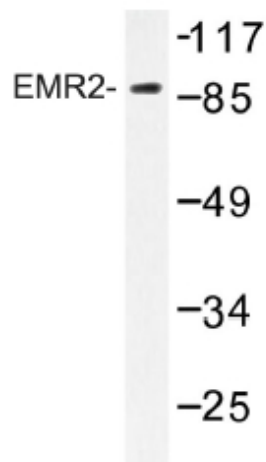
Product Type:	Primary Antibodies
Applications:	IF, WB
Recommended Dilution:	<b>Western Blot:</b> 1/500-1/1000. <b>Immunofluorescence:</b> 1/50-1/200.
Reactivity:	Human
Host:	Rabbit
Clonality:	Polyclonal
Immunogen:	Synthetic peptide, corresponding to amino acids 130-178 of Human EMR2.
Specificity:	This antibody detects endogenous levels of EMR2 protein. (region surrounding Leu160)
Formulation:	Phosphate buffered saline (PBS), pH~7.2 State: Aff - Purified State: Liquid purified Ig fraction (> 95% pure by SDS-PAGE). Preservative: 0.05% Sodium Azide
Concentration:	1.0 mg/ml
Purification:	Affinity Chromatography using epitope-specific immunogen.
Conjugation:	Unconjugated
Storage:	Store undiluted at 2-8°C for one month or (in aliquots) at -20°C for longer. Avoid repeated freezing and thawing.
Stability:	Shelf life: One year from despatch.
Predicted Protein Size:	~ 90 kDa
Gene Name:	adhesion G protein-coupled receptor E2
Database Link:	<a href="#">Entrez Gene 30817 Human Q9UHX3</a>



[View online »](#)

**Background:**

EMR2 is a member of the class B seven-span transmembrane (TM7) receptor family expressed predominantly by cells of the immune system, where it has been shown to be restricted specifically to monocytes and granulocytes. Family members are characterized by an extended extracellular region with a variable number of N terminal epidermal growth factor (EGF)-like domains coupled to a TM7 domain via a mucin-like spacer domain. This gene is closely linked to the gene encoding egf-like molecule containing mucin-like hormone receptor 3 on chromosome 19. This protein does not interact with the ligand decay accelerating factor for complement, unlike the related CD97 antigen, and indicates that these very closely related proteins likely have nonredundant functions. This gene results in multiple transcripts encoding distinct isoforms. ESTs have been isolated from blood, colon, lymph node, placenta, spleen, testis, and uterus libraries.

**Product images:**

Western blot (WB) analysis of EMR2 antibody in extracts from HeLa cells.