

Product datasheet for **AP01211PU-N**

CysLT2 (CYSLTR2) Rabbit Polyclonal Antibody

Product data:

Product Type:	Primary Antibodies
Applications:	IF, WB
Recommended Dilution:	Western Blot: 1/500-1/1000. Immunofluorescence: 1/50-1/200.
Reactivity:	Human
Host:	Rabbit
Clonality:	Polyclonal
Immunogen:	Synthetic peptide, corresponding to amino acids 290-336 of Human CysLTR2.
Specificity:	This antibody detects endogenous levels of CysLTR2 protein. (region surrounding Lys322)
Formulation:	Phosphate buffered saline (PBS), pH~7.2 State: Aff - Purified State: Liquid purified Ig fraction (> 95% pure by SDS-PAGE). Preservative: 0.05% Sodium Azide
Concentration:	1.0 mg/ml
Purification:	Affinity Chromatography using epitope-specific immunogen.
Conjugation:	Unconjugated
Storage:	Store undiluted at 2-8°C for one month or (in aliquots) at -20°C for longer. Avoid repeated freezing and thawing.
Stability:	Shelf life: One year from despatch.
Predicted Protein Size:	~ 40 kDa
Gene Name:	cysteinyl leukotriene receptor 2
Database Link:	Entrez Gene 57105 Human Q9NS75



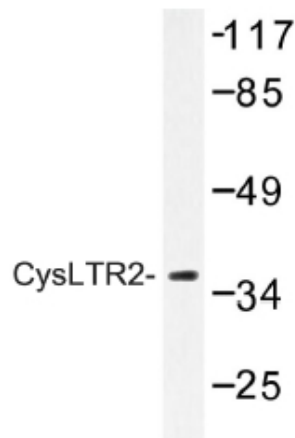
[View online »](#)

Background:

The cysteinyl leukotrienes LTC₄, LTD₄, and LTE₄ are important mediators of human bronchial asthma. Pharmacologic studies have determined that cysteinyl leukotrienes activate at least 2 receptors, CysLT₂ and CysLT₁. This encoded receptor is a member of the superfamily of G protein-coupled receptors. It seems to play a major role in endocrine and cardiovascular systems. CysLT₂ expression has been reported in adrenal medulla, blood, brain, heart, kidney, lung, lymph node, ovary, placenta, prostate, pulmonary artery and vein, small intestine, and spleen.

Synonyms:

Cysteinyl leukotriene receptor 2, CysLTR2, CYSLT2, HG57, HPN321, hGPCR21

Product images:

Western blot (WB) analysis of CysLTR2 antibody in extracts from HeLa cells.