

Product datasheet for **AP01210PU-N**

CCKAR Rabbit Polyclonal Antibody

Product data:

Product Type:	Primary Antibodies
Applications:	ELISA, IF, WB
Recommended Dilution:	Western Blot: 1/500-1/1000. Immunofluorescence: 1/50-1/200.
Reactivity:	Human, Mouse, Rat
Host:	Rabbit
Clonality:	Polyclonal
Immunogen:	Synthetic peptide, corresponding to amino acids 230-280 of Human CCK-AR.
Specificity:	This antibody detects endogenous levels of CCK-AR protein. (region surrounding Pro255)
Formulation:	Phosphate buffered saline (PBS), pH~7.2 State: Aff - Purified State: Liquid purified Ig fraction (> 95% pure by SDS-PAGE). Preservative: 15 mM Sodium Azide
Concentration:	1.0 mg/ml
Purification:	Affinity Chromatography using epitope-specific immunogen.
Conjugation:	Unconjugated
Storage:	Store undiluted at 2-8°C for one month or (in aliquots) at -20°C for longer. Avoid repeated freezing and thawing.
Stability:	Shelf life: One year from despatch.
Predicted Protein Size:	~ 47 kDa
Gene Name:	cholecystokinin A receptor
Database Link:	Entrez Gene 886 Human P32238

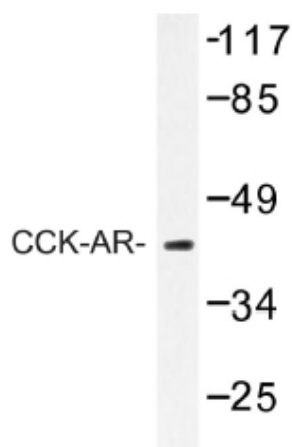
[View online »](#)

Background:

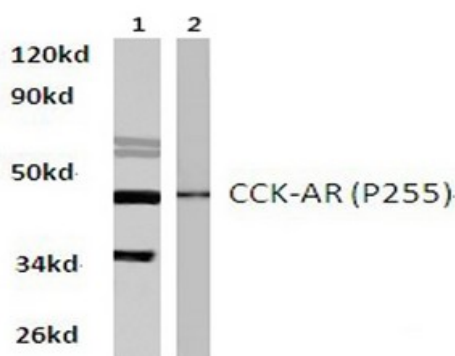
The cholecystokinin (CCK) family of peptide hormones have been implicated in numerous important physiologic events. These appear to be mediated through 2 general classes of receptors, A (CCKAR) and B (CCKBR), based on their binding affinities for CCK/gastrin family peptides. Through binding to class A receptors, CCK is a major physiologic mediator of gallbladder contraction and pancreatic enzyme secretion. It appears to play a role in slowing gastric emptying, relaxation of the sphincter of Oddi, and potentiation of insulin secretion. Further, it has been implicated as a mediator of pancreatic growth and tumorigenesis. Class A receptors have also been described in the anterior pituitary, myenteric plexus, and regions of the central nervous system, where they have been implicated in the pathogenesis of feeding disorders, Parkinson disease, schizophrenia, and drug addiction.

Synonyms:

CCKA Receptor, Cholecystokinin receptor type A, Cholecystokinin-1 receptor, CCKAR, CCKRA

Product images:


Western blot (WB) analysis of CCK-AR antibody in extracts from HUVEC cells.



Western blot (WB) analysis of CCK-AR Antibody in extracts from HeLa and PC12 cells.

Lane 1: HeLa whole cell lysate
Lane 2: PC12 whole cell lysate
CCK-AR (P255) pAb at 1:500 dilution