

Product datasheet for **AP01209PU-N**

Bombesin Receptor 3 (BRS3) Rabbit Polyclonal Antibody

Product data:

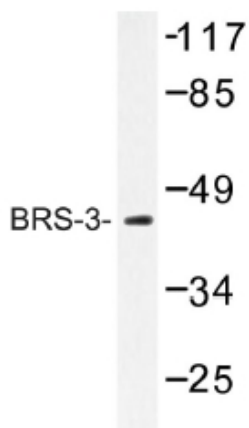
Product Type:	Primary Antibodies
Applications:	IF, WB
Recommended Dilution:	Western Blot: 1/500-1/1000. Immunofluorescence: 1/50-1/200.
Reactivity:	Human
Host:	Rabbit
Clonality:	Polyclonal
Immunogen:	Synthetic peptide, corresponding to amino acids 270-320 of Human BRS-3.
Specificity:	This antibody detects endogenous levels of BRS-3 protein. (region surrounding Glu201)
Formulation:	Phosphate buffered saline (PBS), pH~7.2 State: Aff - Purified State: Liquid purified Ig fraction (> 95% pure by SDS-PAGE). Preservative: 15 mM Sodium Azide
Concentration:	1.0 mg/ml
Purification:	Affinity Chromatography using epitope-specific immunogen.
Conjugation:	Unconjugated
Storage:	Store undiluted at 2-8°C for one month or (in aliquots) at -20°C for longer. Avoid repeated freezing and thawing.
Stability:	Shelf life: One year from despatch.
Predicted Protein Size:	~ 44 kDa
Gene Name:	bombesin like receptor 3
Database Link:	Entrez Gene 680 Human P32247
Background:	Bombesin Receptor 3 expression has been reported in lung (normal and cancer), nasal mucosa, placenta, and uterus. ESTs have been isolated from normal brain and kidney cancer libraries. It has a role in sperm cell division, maturation, or function. This receptor mediates its action by association with G proteins that activate a phosphatidylinositol-calcium second messenger system.



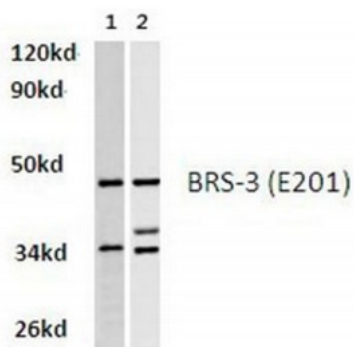
[View online »](#)

Synonyms: BRS-3, Bombesin receptor subtype-3

Product images:



Western blot (WB) analysis of BRS-3 antibody in extracts from HUVEC cells.



Western blot (WB) analysis of BRS-3 antibody in extracts from A549 and hela cells.

Lane 1: Hela whole cell lysate
 Lane 2: A549 whole cell lysate
 BRS-3 (E201) pAb at 1:500 dilution