

Product datasheet for **AP01208PU-N**

G2A (GPR132) Rabbit Polyclonal Antibody

Product data:

Product Type:	Primary Antibodies
Applications:	IF, WB
Recommended Dilution:	Western Blot: 1/500-1/1000. Immunofluorescence: 1/50-1/200.
Reactivity:	Human, Mouse, Rat
Host:	Rabbit
Clonality:	Polyclonal
Immunogen:	Synthetic peptide, corresponding to amino acids 300-346 of Human GPR132.
Specificity:	This antibody detects endogenous levels of G2A protein (region surrounding Lys327).
Formulation:	Phosphate buffered saline (PBS), pH~7.2 State: Aff - Purified State: Liquid purified Ig fraction (> 95% pure by SDS-PAGE) Preservative: 0.05% Sodium Azide
Concentration:	1.0 mg/ml
Purification:	Affinity Chromatography using epitope-specific immunogen
Conjugation:	Unconjugated
Storage:	Store undiluted at 2-8°C for one month or (in aliquots) at -20°C for longer. Avoid repeated freezing and thawing.
Stability:	Shelf life: One year from despatch.
Predicted Protein Size:	~ 42 kDa
Gene Name:	G protein-coupled receptor 132
Database Link:	Entrez Gene 29933 Human Q9UNW8



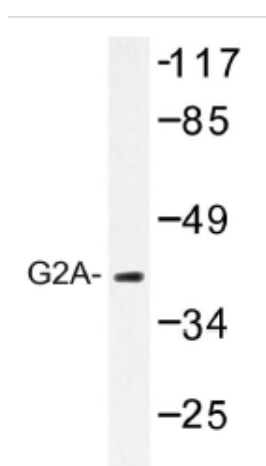
[View online »](#)

Background:

G2A (for G2 accumulation) is a seven transmembrane G protein-coupled receptor that is upregulated in response to DNA damage and stress. G2A is predominantly expressed in hematopoietic tissues and in hematopoietic stem cells, and it is more highly detected in pro-B cells, while lower expression is observed in immature B cells and pre-B cells. G2A is expressed throughout T cell maturation, and it is further increased in response to T-cell activation. Ectopic expression of a G2A fusion protein in NIH/3T3 fibroblasts induces a cell cycle arrest that is consistent with a block at the G2/M transition. G2A is also able to attenuate the proliferative effects of Bcr-Abl, a chimeric tyrosine kinase oncogene, suggesting that G2A possesses anti-oncogenic properties. The amino acid sequence of G2A contains a destruction box motif that is consistently observed in cyclins, where it is required for ubiquitination and proteolytic degradation.

Synonyms:

G-protein coupled receptor 132, G2 accumulation protein

Product images:

Western blot (WB) analysis of G2A antibody in extracts from COS-7 cells.