

## Product datasheet for **AP01204PU-N**

### Frizzled 10 (FZD10) Rabbit Polyclonal Antibody

#### Product data:

|                         |  |
|-------------------------|--|
| Product Type:           | Primary Antibodies   |
| Applications:           | ELISA, IF, IHC, WB   |
| Recommended Dilution:   | <b>Western Blot:</b> 1/500-1/1000.<br><b>Immunofluorescence:</b> 1/50-1/200.<br><b>Immunohistochemistry on Paraffin Sections:</b> 1/50-1/200.                        |
| Reactivity:             | Human, Mouse   |
| Host:                   | Rabbit   |
| Clonality:              | Polyclonal   |
| Immunogen:              | Synthetic peptide, corresponding to amino acids 132-180 of Human Frizzled-10.  |
| Specificity:            | This antibody detects endogenous levels of Frizzled-10 protein. (region surrounding Leu164)  |
| Formulation:            | Phosphate buffered saline (PBS), pH~7.2<br>State: Aff - Purified<br>State: Liquid purified Ig fraction (> 95% pure by SDS-PAGE).<br>Preservative: 0.05% Sodium Azide |
| Concentration:          | 1.0 mg/ml  |
| Purification:           | Affinity Chromatography using epitope-specific immunogen.  |
| Conjugation:            | Unconjugated   |
| Storage:                | Store undiluted at 2-8°C for one month or (in aliquots) at -20°C for longer.<br>Avoid repeated freezing and thawing.   |
| Stability:              | Shelf life: One year from despatch.  |
| Predicted Protein Size: | ~65 kDa  |
| Gene Name:              | frizzled class receptor 10   |
| Database Link:          | <a href="#">Entrez Gene 11211 Human Q9ULW2</a>   |



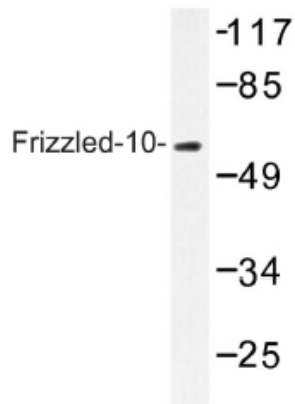
[View online »](#)

**Background:**

This gene is a member of the frizzled gene family. Members of this family encode 7-transmembrane domain proteins that are receptors for the Wingless type MMTV integration site family of signaling proteins. Most frizzled receptors are coupled to the beta-catenin canonical signaling pathway. Using array analysis, expression of this intronless gene is significantly up-regulated in two cases of primary colon cancer. Frizzled 10 is expressed during development in embryonic limbs, neural tube, and central nervous system. It has been reported to be expressed in brain, embryo, kidney, liver, lung and pancreas.

**Synonyms:**

Fz-10, hFz10, FzE7

**Product images:**

Western blot (WB) analysis of Frizzled-10 antibody in extracts from COS-7 cells.