

## Product datasheet for **AP01203PU-N**

### Frizzled homolog 1 (FZD1) Rabbit Polyclonal Antibody

#### Product data:

Product Type:	Primary Antibodies
Applications:	IF, WB
Recommended Dilution:	<b>Western Blot:</b> 1/500-1/1000. <b>Immunofluorescence:</b> 1/50-1/200.
Reactivity:	Human
Host:	Rabbit
Clonality:	Polyclonal
Immunogen:	Synthetic peptide, corresponding to amino acids 22-76 of Human Frizzled-1.
Specificity:	This antibody detects endogenous levels of Frizzled-1 protein. (region surrounding Leu55)
Formulation:	Phosphate buffered saline (PBS), pH~7.2 State: Aff - Purified State: Liquid purified Ig fraction (> 95% pure by SDS-PAGE). Preservative: 0.05% Sodium Azide as preservative
Concentration:	1.0 mg/ml
Purification:	Affinity Chromatography using epitope-specific immunogen.
Conjugation:	Unconjugated
Storage:	Store the antibody undiluted at 2-8°C for one month or (in aliquots) at -20°C for longer. Avoid repeated freezing and thawing.
Stability:	Shelf life: One year from despatch.
Predicted Protein Size:	~71 kDa
Gene Name:	frizzled class receptor 1
Database Link:	<a href="#">Entrez Gene 8321 Human Q9UP38</a>



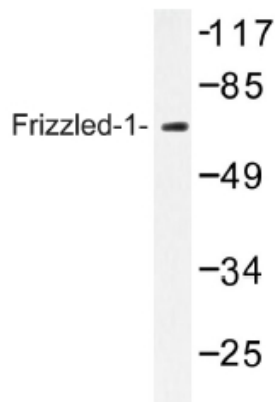
[View online »](#)

**Background:**

The frizzled gene, originally identified in *Drosophila melanogaster*, is involved in the development of tissue polarity. The mammalian homolog of frizzled, as well as several secreted mammalian frizzled-related proteins: FRP-1 (also designated SARP2), FRP-2 (also designated SARP1), FRP-3, FRP-4 and SARP3 (also designated FRP-5), have been identified. The frizzled proteins contain seven transmembrane domains, a cysteine-rich domain in the extracellular region and a carboxy terminal Ser/Thr-xxx-Val motif. They function as receptors for Wnt. The frizzled-1 gene maps to human chromosome 7q21 and is expressed in adult heart, placenta, lung, kidney, pancreas, prostate and ovary and in fetal lung and kidney. Frizzled-2 is expressed in adult heart and fetal brain, lung and kidney. The frizzled related proteins FRP-1, FRP-2, FRP-3, FRP-4 and SARP3 are secreted proteins of approximately 30 kDa that contain regions of homology to the cysteine-rich ligand-binding domain of frizzled and a conserved hydrophilic carboxy terminal.

**Synonyms:**

Fz-1, hFz1, FzE1

**Product images:**

Western blot (WB) analysis of Frizzled-1 antibody in extracts from HeLa cells.